

Product datasheet for **AP54161PU-N**

TAX1BP1 (Center) Rabbit Polyclonal Antibody

Product data:

| | |
|-------------------------|---|
| Product Type: | Primary Antibodies |
| Applications: | WB |
| Recommended Dilution: | ELISA: 1/1000. Western Blot: 1/100 - 1/500. |
| Reactivity: | Human |
| Host: | Rabbit |
| Isotype: | Ig |
| Clonality: | Polyclonal |
| Immunogen: | KLH conjugated synthetic peptide between 399-429 amino acids from the Central region of human TAX1BP1 |
| Specificity: | This antibody reacts to TAX1BP1. |
| Formulation: | PBS State: Aff - Purified State: Liquid purified Ig fraction Preservative: 0.09% (W/V) sodium azide |
| Concentration: | lot specific |
| Purification: | Affinity chromatography on Protein A |
| Conjugation: | Unconjugated |
| Storage: | Store the antibody undiluted at 2-8°C for one month or (in aliquots) at -20°C for longer. Avoid repeated freezing and thawing. |
| Stability: | Shelf life: one year from despatch. |
| Predicted Protein Size: | 90877 Da |
| Gene Name: | Tax1 binding protein 1 |
| Database Link: | Entrez Gene 8887 Human Q86VP1 |
| Background: | The HTLV-1 Tax protein transcriptionally activates the HTLV-1 promoter. Tax also binds to and stimulates the expression of cellular genes, including transcription factors and other proteins (Gachon et al., 1998 [PubMed 9733879]). |

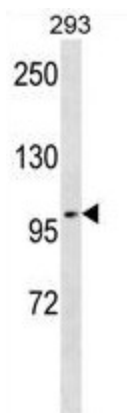


[View online »](#)

Synonyms: Tax1-binding protein 1, TRAF6-binding protein, T6BP, PRO0105

Protein Families: Druggable Genome

Product images:



TAX1BP1 Antibody (Center) western blot analysis in 293 cell line lysates (35ug/lane). This demonstrates the TAX1BP1 antibody detected the TAX1BP1 protein (arrow).