

## Product datasheet for **AP54159PU-N**

### TAT (Center) Rabbit Polyclonal Antibody

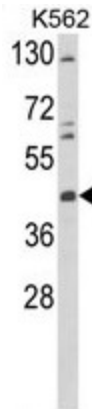
#### Product data:

Product Type:	Primary Antibodies
Applications:	FC, IHC, WB
Recommended Dilution:	<b>ELISA:</b> 1/1000. <b>Western Blot:</b> 1/100 - 1/500. <b>Immunohistochemistry on paraffin sections:</b> 1/50 - 1/100. <b>Flow Cytometry:</b> 1/10 - 1/50.
Reactivity:	Human
Host:	Rabbit
Isotype:	Ig
Clonality:	Polyclonal
Immunogen:	KLH conjugated synthetic peptide between 285~315 amino acids from the Central region of human TAT
Specificity:	This antibody reacts to TAT.
Formulation:	PBS State: Aff - Purified State: Liquid purified Ig fraction Preservative: 0.09% (W/V) sodium azide
Concentration:	lot specific
Purification:	Affinity chromatography on Protein A
Conjugation:	Unconjugated
Storage:	Store the antibody undiluted at 2-8°C for one month or (in aliquots) at -20°C for longer. Avoid repeated freezing and thawing.
Stability:	Shelf life: one year from despatch.
Predicted Protein Size:	50399 Da
Gene Name:	tyrosine aminotransferase
Database Link:	<a href="#">Entrez Gene 6898 Human P17735</a>

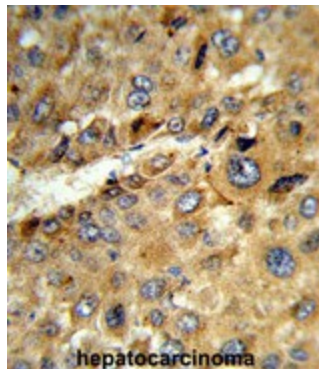


[View online »](#)

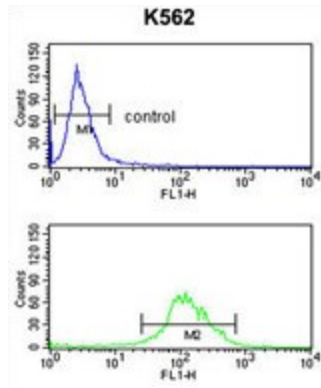
<b>Background:</b>	TAT is a mitochondrial protein tyrosine aminotransferase which is present in the liver and catalyzes the conversion of L-tyrosine into p-hydroxyphenylpyruvate.
<b>Synonyms:</b>	MGC37772; MGC37789; MGC37790; MGC37819; MGC37828; MGC37842
<b>Protein Families:</b>	Druggable Genome, Embryonic stem cells, ES Cell Differentiation/IPS
<b>Protein Pathways:</b>	Cysteine and methionine metabolism, Metabolic pathways, Phenylalanine, tyrosine and tryptophan biosynthesis, Phenylalanine metabolism, Tyrosine metabolism, Ubiquinone and other terpenoid-quinone biosynthesis

**Product images:**

Western blot analysis of TAT Antibody (Center) in K562 cell line lysates (35ug/lane). TAT (arrow) was detected using the purified Pab.



Formalin-fixed and paraffin-embedded human hepatocarcinoma reacted with TAT Antibody (Center), which was peroxidase-conjugated to the secondary antibody, followed by DAB staining. This data demonstrates the use of this antibody for immunohistochemistry; clinical relevance has not been evaluated.



TAT Antibody (Center) flow cytometry analysis of K562 cells (bottom histogram) compared to a negative control cell (top histogram). FITC-conjugated goat-anti-rabbit secondary antibodies were used for the analysis.