

Product datasheet for **AP54158PU-N**

TAS2R7 (C-term) Rabbit Polyclonal Antibody

Product data:

Product Type:	Primary Antibodies
Applications:	WB
Recommended Dilution:	ELISA: 1/1000. Western Blot: 1/100 - 1/500.
Reactivity:	Human
Host:	Rabbit
Isotype:	Ig
Clonality:	Polyclonal
Immunogen:	KLH conjugated synthetic peptide between 207-235 amino acids from the C-terminal region of human TAS2R7
Specificity:	This antibody reacts to TAS2R7.
Formulation:	PBS State: Aff - Purified State: Liquid purified Ig fraction Preservative: 0.09% (W/V) sodium azide
Concentration:	lot specific
Purification:	Affinity chromatography on Protein A
Conjugation:	Unconjugated
Storage:	Store the antibody undiluted at 2-8°C for one month or (in aliquots) at -20°C for longer. Avoid repeated freezing and thawing.
Stability:	Shelf life: one year from despatch.
Predicted Protein Size:	36550 Da
Gene Name:	taste 2 receptor member 7
Database Link:	Entrez Gene 50837 Human Q9NYW3



[View online »](#)

Background:

This gene product belongs to the family of candidate taste receptors that are members of the G-protein-coupled receptor superfamily. These proteins are specifically expressed in the taste receptor cells of the tongue and palate epithelia. They are organized in the genome in clusters and are genetically linked to loci that influence bitter perception in mice and humans. In functional expression studies, they respond to bitter tastants. This gene maps to the taste receptor gene cluster on chromosome 12p13.

Synonyms:

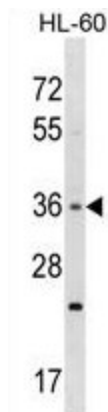
TRB4

Protein Families:

Transmembrane

Protein Pathways:

Taste transduction

Product images:

TAS2R7 Antibody (C-term) western blot analysis in HL-60 cell line lysates (35ug/lane). This demonstrates the TAS2R7 antibody detected the TAS2R7 protein (arrow).