

## Product datasheet for **AP54156PU-N**

### **TAS2R1 (C-term) Rabbit Polyclonal Antibody**

#### **Product data:**

Product Type:	Primary Antibodies
Applications:	WB
Recommended Dilution:	<b>ELISA:</b> 1/1000. <b>Western Blot:</b> 1/100 - 1/500.
Reactivity:	Human
Host:	Rabbit
Isotype:	Ig
Clonality:	Polyclonal
Immunogen:	KLH conjugated synthetic peptide between 266-297 amino acids from the C-terminal region of human TAS2R1
Specificity:	This antibody reacts to TAS2R1.
Formulation:	PBS State: Aff - Purified State: Liquid purified Ig fraction Preservative: 0.09% (W/V) sodium azide
Concentration:	lot specific
Purification:	Affinity chromatography on Protein A
Conjugation:	Unconjugated
Storage:	Store the antibody undiluted at 2-8°C for one month or (in aliquots) at -20°C for longer. Avoid repeated freezing and thawing.
Stability:	Shelf life: one year from despatch.
Predicted Protein Size:	34333 Da
Gene Name:	taste 2 receptor member 1
Database Link:	<u><a href="#">Entrez Gene 50834 Human Q9NYW7</a></u>



[View online »](#)

**Background:**

This gene encodes a member of a family of candidate taste receptors that are members of the G protein-coupled receptor superfamily and that are specifically expressed by taste receptor cells of the tongue and palate epithelia. This intronless taste receptor gene encodes a 7-transmembrane receptor protein, functioning as a bitter taste receptor. This gene is mapped to chromosome 5p15, the location of a genetic locus (PROP) that controls the detection of the bitter compound 6-n-propyl-2-thiouracil.

**Synonyms:**

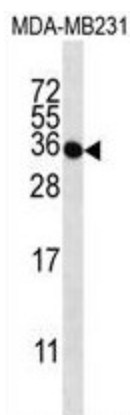
Taste receptor T2R1, TRB7

**Protein Families:**

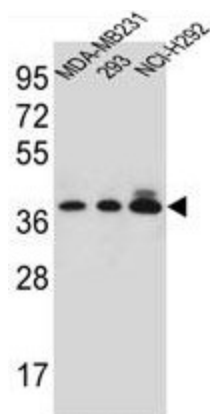
Druggable Genome, Transmembrane

**Protein Pathways:**

Taste transduction

**Product images:**


TAS2R1 Antibody (C-term) western blot analysis in MDA-MB231 cell line lysates (35ug/lane). This demonstrates the TAS2R1 antibody detected the TAS2R1 protein (arrow).



TAS2R1 Antibody (C-term) western blot analysis in MDA-MB231, 293, NCI-H292 cell line lysates (35ug/lane). This demonstrates the TAS2R1 antibody detected the TAS2R1 protein (arrow).