

Product datasheet for **AP54155PU-N**

TAS1R3 (N-term) Rabbit Polyclonal Antibody

Product data:

Product Type:	Primary Antibodies
Applications:	WB
Recommended Dilution:	ELISA: 1/1,000. Western Blot: 1/1,000.
Reactivity:	Human
Host:	Rabbit
Isotype:	Ig
Clonality:	Polyclonal
Immunogen:	KLH conjugated synthetic peptide between 229-258 amino acids from the N-terminal region of human TAS1R3
Specificity:	This antibody recognizes Human TAS1R3. Other species not tested.
Formulation:	PBS State: Aff - Purified State: Liquid purified Ig fraction Preservative: 0.09% (W/V) sodium azide
Concentration:	lot specific
Purification:	Affinity chromatography on Protein A
Conjugation:	Unconjugated
Storage:	Store undiluted at 2-8°C for one month or (in aliquots) at -20°C for longer. Avoid repeated freezing and thawing.
Stability:	Shelf life: one year from despatch.
Predicted Protein Size:	93386 Da
Gene Name:	taste 1 receptor member 3
Database Link:	Entrez Gene 83756 Human Q7RTX0



[View online »](#)

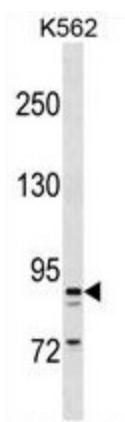
Background: The TAS1R3 gene encodes the human homolog of mouse Sac, a major determinant of differences between sweet-sensitive and -insensitive mouse strains in their responsiveness to sucrose, saccharine, and other sweeteners (Max et al., 2001 [PubMed 11326277]).

Synonyms: TR3, Sweet taste receptor T1R3

Protein Families: Transmembrane

Protein Pathways: Taste transduction

Product images:



TAS1R3 Antibody (N-term) western blot analysis in K562 cell line lysates (35ug/lane). This demonstrates the TAS1R3 antibody detected the TAS1R3 protein (arrow).