

Product datasheet for **AP54154PU-N**

TAS1R2 (C-term) Rabbit Polyclonal Antibody

Product data:

Product Type:	Primary Antibodies
Applications:	WB
Recommended Dilution:	Western Blot: 1/100 - 1/500. ELISA: 1/1000.
Reactivity:	Human
Host:	Rabbit
Isotype:	Ig
Clonality:	Polyclonal
Immunogen:	KLH conjugated synthetic peptide between 698-726 amino acids from the C-terminal region of human TAS1R2
Specificity:	This antibody reacts to TAS1R2.
Formulation:	PBS State: Aff - Purified State: Liquid purified Ig fraction Preservative: 0.09% (W/V) sodium azide
Concentration:	lot specific
Purification:	Affinity chromatography on Protein A
Conjugation:	Unconjugated
Storage:	Store the antibody undiluted at 2-8°C for one month or (in aliquots) at -20°C for longer. Avoid repeated freezing and thawing.
Stability:	Shelf life: one year from despatch.
Predicted Protein Size:	95183 Da
Gene Name:	taste 1 receptor member 2
Database Link:	Entrez Gene 80834 Human Q8TE23
Background:	Putative taste receptor. TAS1R2/TAS1R3 recognizes diverse natural and synthetic sweeteners.
Synonyms:	Sweet taste receptor T1R2, TR2

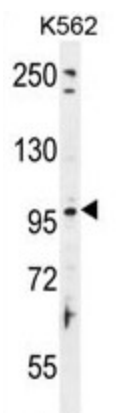


[View online »](#)

Protein Families: Druggable Genome, Transmembrane

Protein Pathways: Taste transduction

Product images:



TAS1R2 Antibody (C-term) western blot analysis in K562 cell line lysates (35ug/lane). This demonstrates the TAS1R2 antibody detected the TAS1R2 protein (arrow).