

Product datasheet for **AP54153PU-N**

TAS1R1 (Center) Rabbit Polyclonal Antibody

Product data:

Product Type:	Primary Antibodies
Applications:	WB
Recommended Dilution:	ELISA: 1/1000. Western Blot: 1/100 - 1/500.
Reactivity:	Human
Host:	Rabbit
Isotype:	Ig
Clonality:	Polyclonal
Immunogen:	KLH conjugated synthetic peptide between 322-351 amino acids from the Central region of human TAS1R1
Specificity:	This antibody reacts to TAS1R1.
Formulation:	PBS State: Aff - Purified State: Liquid purified Ig fraction Preservative: 0.09% (W/V) sodium azide
Concentration:	lot specific
Purification:	Affinity chromatography on Protein A
Conjugation:	Unconjugated
Storage:	Store the antibody undiluted at 2-8°C for one month or (in aliquots) at -20°C for longer. Avoid repeated freezing and thawing.
Stability:	Shelf life: one year from despatch.
Predicted Protein Size:	93074 Da
Gene Name:	taste 1 receptor member 1
Database Link:	Entrez Gene 80835 Human Q7RTX1



[View online »](#)

Background:

The protein encoded by this gene is a G protein-coupled receptor and is a component of the heterodimeric amino acid taste receptor T1R1+3. The T1R1+3 receptor responds to L-amino acids but not to D-enantiomers or other compounds. Most amino acids that are perceived as sweet activate T1R1+3, and this activation is strictly dependent on an intact T1R1+3 heterodimer. Multiple transcript variants encoding different isoforms have been found for this gene.

Synonyms:

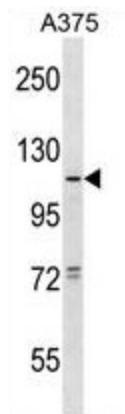
Taste receptor T1R1, TR1, GM148

Protein Families:

Druggable Genome, Transmembrane

Protein Pathways:

Taste transduction

Product images:

TAS1R1 Antibody (Center) western blot analysis in A375 cell line lysates (35ug/lane). This demonstrates the TAS1R1 antibody detected the TAS1R1 protein (arrow).