

Product datasheet for **AP54150PU-N**

Tapasin Related Protein (TAPBPL) (N-term) Rabbit Polyclonal Antibody

Product data:

Product Type:	Primary Antibodies
Applications:	WB
Recommended Dilution:	ELISA: 1/1000. Western Blot: 1/100 - 1/500.
Reactivity:	Human
Host:	Rabbit
Isotype:	Ig
Clonality:	Polyclonal
Immunogen:	KLH conjugated synthetic peptide between 1-31 amino acids from the N-terminal region of human TAPBPL
Specificity:	This antibody reacts to TAPBPL.
Formulation:	PBS State: Aff - Purified State: Liquid purified Ig fraction Preservative: 0.09% (W/V) sodium azide
Concentration:	lot specific
Purification:	Affinity chromatography on Protein A
Conjugation:	Unconjugated
Storage:	Store the antibody undiluted at 2-8°C for one month or (in aliquots) at -20°C for longer. Avoid repeated freezing and thawing.
Stability:	Shelf life: one year from despatch.
Predicted Protein Size:	50183 Da
Gene Name:	TAP binding protein like
Database Link:	Entrez Gene 55080 Human Q9BX59



[View online »](#)

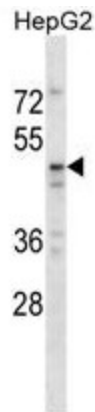
Background: Tapasin, or TAPBP (MIM 601962), is a member of the variable-constant Ig superfamily that links major histocompatibility complex (MHC) class I molecules to the transporter associated with antigen processing (TAP; see MIM 170260) in the endoplasmic reticulum (ER). The TAPBP gene is located near the MHC complex on chromosome 6p21.3. TAPBPL is a member of the Ig superfamily that is localized on chromosome 12p13.3, a region somewhat paralogous to the MHC.

Synonyms: Tapasin-like, TAPASIN-R, TAPBP-R

Note:

Protein Families: Druggable Genome, Transmembrane

Product images:



TAPBPL Antibody (N-term) western blot analysis in HepG2 cell line lysates (35ug/lane). This demonstrates the TAPBPL antibody detected the TAPBPL protein (arrow).