

## Product datasheet for **AP54146PU-N**

### TAF4B (C-term) Rabbit Polyclonal Antibody

#### Product data:

Product Type:	Primary Antibodies
Applications:	WB
Recommended Dilution:	<b>ELISA:</b> 1/1000. <b>Western Blot:</b> 1/100 - 1/500.
Reactivity:	Human
Host:	Rabbit
Isotype:	Ig
Clonality:	Polyclonal
Immunogen:	KLH conjugated synthetic peptide between 654-683 amino acids from the C-terminal region of human TAF4B
Specificity:	This antibody reacts to TAF4B.
Formulation:	PBS State: Aff - Purified State: Liquid purified Ig fraction Preservative: 0.09% (W/V) sodium azide
Concentration:	lot specific
Purification:	Affinity chromatography on Protein A
Conjugation:	Unconjugated
Storage:	Store the antibody undiluted at 2-8°C for one month or (in aliquots) at -20°C for longer. Avoid repeated freezing and thawing.
Stability:	Shelf life: one year from despatch.
Predicted Protein Size:	91091 Da
Gene Name:	TATA-box binding protein associated factor 4b
Database Link:	<a href="#">Entrez Gene 6875 Human Q92750</a>
Background:	TATA-binding protein associated factors (TAFs) participate, with TATA binding protein (TBP; MIM 600075), in the formation of the TFIID protein complex (see MIM 313650), which is involved in the initiation of gene transcription by RNA polymerase II (see MIM 180660).

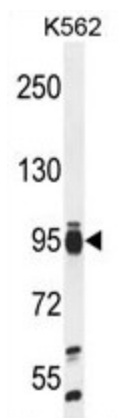


[View online »](#)

**Synonyms:** Transcription initiation factor TFIID subunit 4B, TAF2C2, TAFII105

**Protein Pathways:** Basal transcription factors, Huntington's disease

**Product images:**



TAF4B Antibody (C-term) western blot analysis in K562 cell line lysates (35ug/lane). This demonstrates the TAF4B antibody detected the TAF4B protein (arrow).