

## Product datasheet for **AP54145PU-N**

### TAF3 (C-term) Rabbit Polyclonal Antibody

#### Product data:

Product Type:	Primary Antibodies
Applications:	WB
Recommended Dilution:	<b>ELISA:</b> 1/1000. <b>Western Blot:</b> 1/100 - 1/500.
Reactivity:	Human, Mouse
Host:	Rabbit
Isotype:	Ig
Clonality:	Polyclonal
Immunogen:	KLH conjugated synthetic peptide between 613~643 amino acids from the C-terminal region of human TAF3
Specificity:	This antibody reacts to TAF3.
Formulation:	PBS State: Aff - Purified State: Liquid purified Ig fraction Preservative: 0.09% (W/V) sodium azide
Concentration:	lot specific
Purification:	Affinity chromatography on Protein A
Conjugation:	Unconjugated
Storage:	Store the antibody undiluted at 2-8°C for one month or (in aliquots) at -20°C for longer. Avoid repeated freezing and thawing.
Stability:	Shelf life: one year from despatch.
Predicted Protein Size:	103582 Da
Gene Name:	TATA-box binding protein associated factor 3
Database Link:	<a href="#">Entrez Gene 209361 Mouse</a> <a href="#">Entrez Gene 83860 Human</a> <a href="#">Q5VWG9</a>



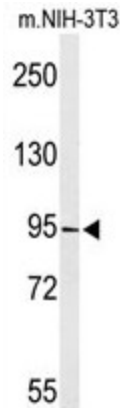
[View online »](#)

**Background:** The highly conserved RNA polymerase II transcription factor TFIID (see TAF1; MIM 313650) comprises the TATA box-binding protein (TBP; MIM 600075) and a set of TBP-associated factors (TAFs), including TAF3. TAFs contribute to promoter recognition and selectivity and act as antiapoptotic factors (Gangloff et al., 2001 [PubMed 11438666]).

**Synonyms:** Transcription initiation factor TFIID subunit 3, TBP-associated factor 3, TAF(II)140, TAF140, TAFII-140, TAFII140

**Protein Families:** Druggable Genome

**Product images:**



Western blot analysis of TAF3 Antibody (C-term) in NIH-3T3 cell line lysates (35ug/lane). TAF3 (arrow) was detected using the purified Pab.