

Product datasheet for **AP54144PU-N**

TAF2 (C-term) Rabbit Polyclonal Antibody

Product data:

Product Type:	Primary Antibodies
Applications:	FC, IHC, WB
Recommended Dilution:	ELISA: 1/1000. Western Blot: 1/100 - 1/500. Immunohistochemistry on paraffin sections: 1/50 - 1/100. Flow Cytometry: 1/10 - 1/50.
Reactivity:	Human, Mouse
Host:	Rabbit
Isotype:	Ig
Clonality:	Polyclonal
Immunogen:	KLH conjugated synthetic peptide between 1159~1188 amino acids from the C-terminal region of human TAF2
Specificity:	This antibody reacts to TAF2.
Formulation:	PBS State: Aff - Purified State: Liquid purified Ig fraction Preservative: 0.09% (W/V) sodium azide
Concentration:	lot specific
Purification:	Affinity chromatography on Protein A
Conjugation:	Unconjugated
Storage:	Store the antibody undiluted at 2-8°C for one month or (in aliquots) at -20°C for longer. Avoid repeated freezing and thawing.
Stability:	Shelf life: one year from despatch.
Predicted Protein Size:	136971 Da
Gene Name:	TATA-box binding protein associated factor 2
Database Link:	Entrez Gene 319944 Mouse Entrez Gene 6873 Human Q6P1X5



[View online »](#)

Background:

Initiation of transcription by RNA polymerase II requires the activities of more than 70 polypeptides. The protein that coordinates these activities is transcription factor IID (TFIID), which binds to the core promoter to position the polymerase properly, serves as the scaffold for assembly of the remainder of the transcription complex, and acts as a channel for regulatory signals. TFIID is composed of the TATA-binding protein (TBP) and a group of evolutionarily conserved proteins known as TBP-associated factors or TAFs. TAFs may participate in basal transcription, serve as coactivators, function in promoter recognition or modify general transcription factors (GTFs) to facilitate complex assembly and transcription initiation. This gene encodes one of the larger subunits of TFIID that is stably associated with the TFIID complex. It contributes to interactions at and downstream of the transcription initiation site, interactions that help determine transcription complex response to activators.

Synonyms:

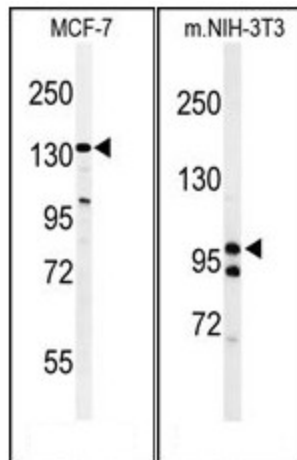
TAFII150, TAFII-150, CIF150, TAF2B

Protein Families:

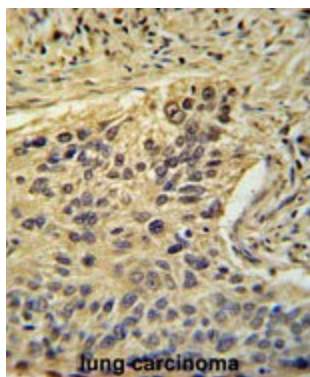
Protease, Transcription Factors

Protein Pathways:

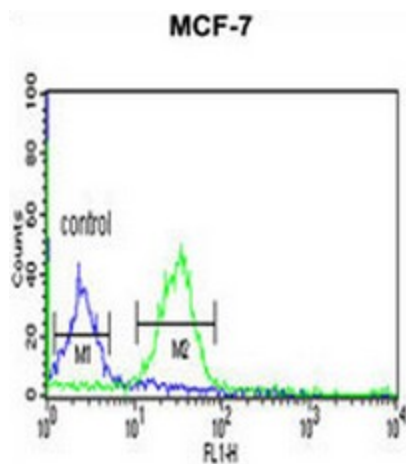
Basal transcription factors

Product images:


(LEFT) Western blot analysis of TAF2 Antibody (C-Term) in MCF-7 cell line lysates (35ug/lane). TAF2 (arrow) was detected using the purified Pab.
(RIGHT) Western blot analysis of TAF2 Antibody (C-Term) in mouse NIH-3T3 cell line lysates (35ug/lane). TAF2 (arrow) was detected using the purified Pab.



TAF2 Antibody (C-Term) immunohistochemistry analysis in formalin fixed and paraffin embedded human lung carcinoma followed by peroxidase conjugation of the secondary antibody and DAB staining. This data demonstrates the use of the TAF2 Antibody (C-Term) for immunohistochemistry. Clinical relevance has not been evaluated.



TAF2 Antibody (C-Term) flow cytometric analysis of MCF-7 cells (right histogram) compared to a negative control cell (left histogram). FITC-conjugated goat-anti-rabbit secondary antibodies were used for the analysis.