

Product datasheet for **AP54143PU-N**

TAF1 48 (TAF1A) (N-term) Rabbit Polyclonal Antibody

Product data:

Product Type:	Primary Antibodies
Applications:	WB
Recommended Dilution:	ELISA: 1/1000. Western Blot: 1/100 - 1/500.
Reactivity:	Human
Host:	Rabbit
Isotype:	Ig
Clonality:	Polyclonal
Immunogen:	KLH conjugated synthetic peptide between 67-97 amino acids from the N-terminal region of human TAF1A
Specificity:	This antibody reacts to TAF1A.
Formulation:	PBS State: Aff - Purified State: Liquid purified Ig fraction Preservative: 0.09% (W/V) sodium azide
Concentration:	lot specific
Purification:	Affinity chromatography on Protein A
Conjugation:	Unconjugated
Storage:	Store the antibody undiluted at 2-8°C for one month or (in aliquots) at -20°C for longer. Avoid repeated freezing and thawing.
Stability:	Shelf life: one year from despatch.
Predicted Protein Size:	52676 Da
Gene Name:	TATA-box binding protein associated factor, RNA polymerase I subunit A
Database Link:	Entrez Gene 9015 Human Q15573



[View online »](#)

Background:

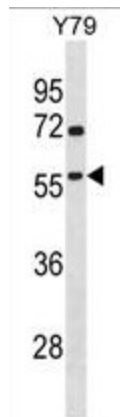
Initiation of transcription by RNA polymerase I requires the formation of a complex composed of the TATA-binding protein (TBP) and three TBP-associated factors (TAFs) specific for RNA polymerase I. This complex, known as SL1, binds to the core promoter of ribosomal RNA genes to position the polymerase properly and acts as a channel for regulatory signals. This gene encodes the smallest SL1-specific TAF. Two transcripts encoding different isoforms have been identified.

Synonyms:

TAFI48

Protein Families:

Transcription Factors

Product images:

TAF1A Antibody (N-term) western blot analysis in Y79 cell line lysates (35ug/lane). This demonstrates the TAF1A antibody detected the TAF1A protein (arrow).