

## Product datasheet for **AP54133PU-N**

### **TM4SF4 (N-term) Rabbit Polyclonal Antibody**

#### **Product data:**

Product Type:	Primary Antibodies
Applications:	WB
Recommended Dilution:	<b>ELISA:</b> 1/1000. <b>Western Blot:</b> 1/100 - 1/500.
Reactivity:	Human, Mouse
Host:	Rabbit
Isotype:	Ig
Clonality:	Polyclonal
Immunogen:	KLH conjugated synthetic peptide selected from the N-terminal region of human T4S4
Specificity:	This antibody reacts to T4S4.
Formulation:	PBS State: Purified State: Liquid purified Ig fraction Preservative: 0.09% (W/V) sodium azide
Concentration:	lot specific
Purification:	Affinity chromatography on Protein A
Conjugation:	Unconjugated
Storage:	Store the antibody undiluted at 2-8°C for one month or (in aliquots) at -20°C for longer. Avoid repeated freezing and thawing.
Stability:	Shelf life: one year from despatch.
Predicted Protein Size:	21396 Da
Gene Name:	Homo sapiens transmembrane 4 L six family member 4 (TM4SF4)
Database Link:	<a href="#">Entrez Gene 7104 Human P48230</a>



[View online »](#)

**Background:**

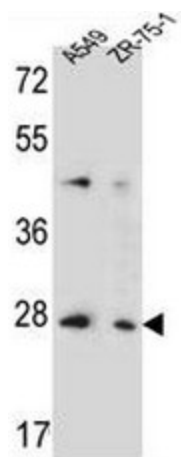
T4S4 is a member of the transmembrane 4 superfamily, also known as the tetraspanin family. Most of these members are cell-surface proteins that are characterized by the presence of four hydrophobic domains. The proteins mediate signal transduction events that play a role in the regulation of cell development, activation, growth and motility. This encoded protein is a cell surface glycoprotein that can regulate cell proliferation. The use of alternate polyadenylation sites has been found for this gene.

**Synonyms:**

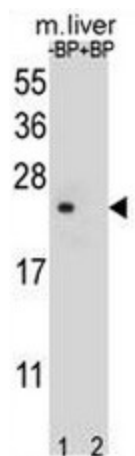
ILTMP, IL-TMP

**Protein Families:**

Transmembrane

**Product images:**


T4S4 Antibody (N-term) western blot analysis in A549, ZR-75-1 cell line lysates (35ug/lane). This demonstrates the T4S4 antibody detected the T4S4 protein (arrow).



Western blot analysis of T4S4 Antibody (N-term) Pab pre-incubated without (lane 1) and with (lane 2) blocking peptide in liver cell line lysate. T4S4 Antibody (N-term) (arrow) was detected using the purified Pab (1:60/250 dilution).