

Product datasheet for **AP54129PU-N**

SYTL1 (Center) Rabbit Polyclonal Antibody

Product data:

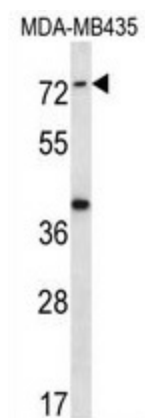
Product Type:	Primary Antibodies
Applications:	WB
Recommended Dilution:	WB; E. The suggested dilution is: ELISA ~ 1:1,000 Western blotting ~ 1:100~500
Reactivity:	Human
Host:	Rabbit
Isotype:	Ig
Clonality:	Polyclonal
Immunogen:	KLH conjugated synthetic peptide between 291-321 amino acids from the Central region of human SYTL1
Specificity:	This antibody detects SYTL1 (Center).
Formulation:	PBS State: Aff - Purified State: Liquid Ig fraction Preservative: 0.09% (W/V) sodium azide
Concentration:	lot specific
Purification:	Protein A column followed by peptide affinity purification
Conjugation:	Unconjugated
Storage:	Store at 2 - 8 °C for up to six months or (in aliquots) at -20 °C for longer. Avoid repeated freezing and thawing.
Stability:	Shelf life: one year from despatch.
Gene Name:	synaptotagmin like 1
Database Link:	Entrez Gene 84958 Human Q8IYJ3
Background:	SYTL1 may play a role in vesicle trafficking (By similarity). It binds phosphatidylinositol 3,4,5-triphosphate. Acts as a RAB27A effector protein and may play a role in cytotoxic granule exocytosis in lymphocytes (By similarity).


[View online »](#)

Synonyms: Synaptotagmin-like protein 1, SLP1, Protein JFC1, Exophilin-7

Note: **Molecular Weight:** 61857 Da

Product images:



SYTL1 Antibody (Center) western blot analysis in MDA-MB435 cell line lysates (35 ug/lane). This demonstrates the SYTL1 antibody detected the SYTL1 protein (arrow).