

## Product datasheet for **AP54128PU-N**

### **SYT8 (Center) Rabbit Polyclonal Antibody**

#### **Product data:**

Product Type:	Primary Antibodies
Applications:	IHC, WB
Recommended Dilution:	<b>ELISA:</b> 1/1,000. <b>Western blotting:</b> 1/50-1/100. <b>Immunohistochemistry:</b> 1/50-1/100.
Reactivity:	Human, Mouse
Host:	Rabbit
Isotype:	Ig
Clonality:	Polyclonal
Immunogen:	KLH conjugated synthetic peptide between 67-96 amino acids from the Central region of Human SYT8 (NP_612634.3)
Specificity:	Recognizes SYT8 (Center).
Formulation:	PBS with 0.09% (W/V) Sodium Azide as preservative State: Aff - Purified State: Liquid purified Ig fraction
Concentration:	lot specific
Purification:	Protein A column followed by peptide Affinity purification
Conjugation:	Unconjugated
Storage:	Store the antibody undiluted at 2-8°C for one month or (in aliquots) at -20°C for longer. Avoid repeated freezing and thawing.
Stability:	Shelf life: one year from despatch.
Gene Name:	synaptotagmin 8
Database Link:	<a href="#">Entrez Gene 55925 Mouse</a> <a href="#">Entrez Gene 90019 Human</a> <a href="#">Q8NBV8</a>
Background:	Synaptotagmins, such as SYT8, share a common domain structure that includes a transmembrane domain and a cytoplasmic region composed of 2 C2 domains. Some synaptotagmins are involved in synaptic membrane fusion, while others have a more general function in endocytosis. For further information on synaptotagmins, see MIM 185605.



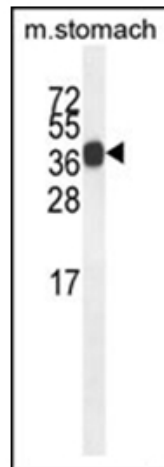
[View online »](#)

**Synonyms:** Synaptotagmin 8, SYT8, SYT-8, Synaptotagmin VIII, SytVIII

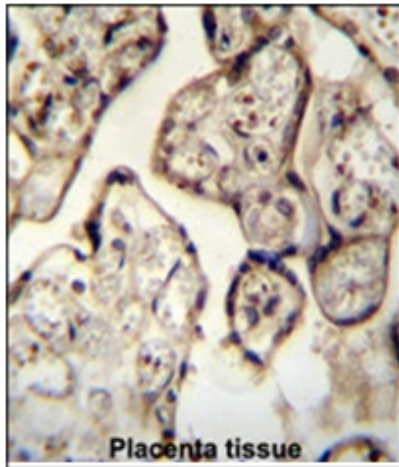
**Note:** **Molecular Weight:** 18021 Da

**Protein Families:** Transmembrane

**Product images:**



Western blot analysis using SYT8 Antibody (Center) in Mouse stomach tissue lysates (35ug/lane). This demonstrates the SYT8 antibody detected the SYT8 protein (arrow).



Immunohistochemistry analysis in Formalin Fixed, Paraffin Embedded Human Placenta tissue stained with SYT8 antibody (Center) followed by peroxidase conjugation of the secondary antibody and DAB staining. This data demonstrates the use of the SYT8 antibody (Center) for immunohistochemistry. Clinical relevance has not been evaluated.