

Product datasheet for **AP54126PU-N**

Synaptogyrin 2 (SYNGR2) (N-term) Rabbit Polyclonal Antibody

Product data:

Product Type:	Primary Antibodies
Applications:	WB
Recommended Dilution:	ELISA: 1/1000. Western Blot: 1/100 - 1/500.
Reactivity:	Human
Host:	Rabbit
Isotype:	Ig
Clonality:	Polyclonal
Immunogen:	KLH conjugated synthetic peptide between 27-56 amino acids from the N-terminal region of human SYNGR2
Specificity:	This antibody reacts to SYNGR2.
Formulation:	PBS State: Aff - Purified State: Liquid purified Ig fraction Preservative: 0.09% (W/V) sodium azide
Concentration:	lot specific
Purification:	Affinity chromatography on Protein A
Conjugation:	Unconjugated
Storage:	Store the antibody undiluted at 2-8°C for one month or (in aliquots) at -20°C for longer. Avoid repeated freezing and thawing.
Stability:	Shelf life: one year from despatch.
Predicted Protein Size:	24810 Da
Gene Name:	synaptogyrin 2
Database Link:	Entrez Gene 9144 Human O43760



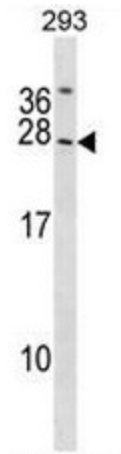
[View online »](#)

Background: This gene encodes an integral membrane protein containing four transmembrane regions and a C-terminal cytoplasmic tail that is tyrosine phosphorylated. The exact function of this protein is unclear, but studies of a similar rat protein suggest that it may play a role in regulating membrane traffic in non-neuronal cells. The gene belongs to the synaptogyrin gene family. [provided by RefSeq].

Synonyms: Cellugyrin

Protein Families: Transmembrane

Product images:



SYNGR2 Antibody (N-term) western blot analysis in 293 cell line lysates (35ug/lane). This demonstrates the SYNGR2 antibody detected the SYNGR2 protein (arrow).