

## Product datasheet for **AP54125PU-N**

### Synaptogyrin 1 (SYNGR1) (C-term) Rabbit Polyclonal Antibody

#### Product data:

Product Type:	Primary Antibodies
Applications:	WB
Recommended Dilution:	<b>ELISA:</b> 1/1000. <b>Western Blot:</b> 1/100 - 1/500.
Reactivity:	Human
Host:	Rabbit
Isotype:	Ig
Clonality:	Polyclonal
Immunogen:	KLH conjugated synthetic peptide between 153-183 amino acids from the C-terminal region of human SYNGR1
Specificity:	This antibody reacts to SYNGR1.
Formulation:	PBS State: Aff - Purified State: Liquid purified Ig fraction Preservative: 0.09% (W/V) sodium azide
Concentration:	lot specific
Purification:	Affinity chromatography on Protein A
Conjugation:	Unconjugated
Storage:	Store the antibody undiluted at 2-8°C for one month or (in aliquots) at -20°C for longer. Avoid repeated freezing and thawing.
Stability:	Shelf life: one year from despatch.
Predicted Protein Size:	25456 Da
Gene Name:	synaptogyrin 1
Database Link:	<a href="#">Entrez Gene 9145 Human O43759</a>



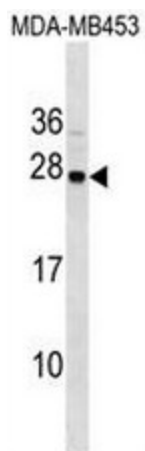
[View online »](#)

**Background:** SYNGR1 is an integral membrane protein associated with presynaptic vesicles in neuronal cells. The exact function of this protein is unclear, but studies of a similar murine protein suggest that it functions in synaptic plasticity without being required for synaptic transmission. The gene product belongs to the synaptogyrin gene family.

**Synonyms:** MGC:1939

**Protein Families:** Transmembrane

**Product images:**



SYNGR1 Antibody (C-term) western blot analysis in MDA-MB453 cell line lysates (35ug/lane). This demonstrates the SYNGR1 antibody detected the SYNGR1 protein (arrow).