

## Product datasheet for **AP54124PU-N**

### Nesprin3 (SYNE3) (C-term) Rabbit Polyclonal Antibody

#### Product data:

Product Type:	Primary Antibodies
Applications:	IHC, WB
Recommended Dilution:	<b>ELISA:</b> 1/1000. <b>Western Blot:</b> 1/100 - 1/500. <b>Immunohistochemistry on paraffin sections:</b> 1/50 - 1/100.
Reactivity:	Human, Mouse
Host:	Rabbit
Isotype:	Ig
Clonality:	Polyclonal
Immunogen:	KLH conjugated synthetic peptide between 855-884 amino acids from the C-terminal region of human SYNE3
Specificity:	This antibody reacts to SYNE3.
Formulation:	PBS State: Aff - Purified State: Liquid purified Ig fraction Preservative: 0.09% (W/V) sodium azide
Concentration:	lot specific
Purification:	Affinity chromatography on Protein A
Conjugation:	Unconjugated
Storage:	Store the antibody undiluted at 2-8°C for one month or (in aliquots) at -20°C for longer. Avoid repeated freezing and thawing.
Stability:	Shelf life: one year from despatch.
Predicted Protein Size:	112216 Da
Gene Name:	spectrin repeat containing nuclear envelope family member 3
Database Link:	<a href="#">Entrez Gene 212073 Mouse</a> <a href="#">Entrez Gene 161176 Human</a> <a href="#">Q6ZMZ3</a>



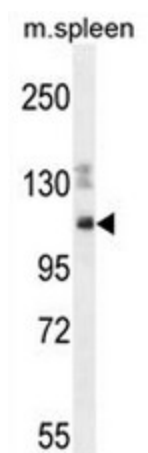
[View online »](#)

**Background:** Component of SUN-protein-containing multivariate complexes also called LINC complexes which link the nucleoskeleton and cytoskeleton by providing versatile outer nuclear membrane attachment sites for cytoskeletal filaments. Involved in the maintenance of nuclear organization and structural integrity. Probable anchoring protein which tethers the nucleus to the cytoskeleton by binding PLEC which can associate with the intermediate filament system.

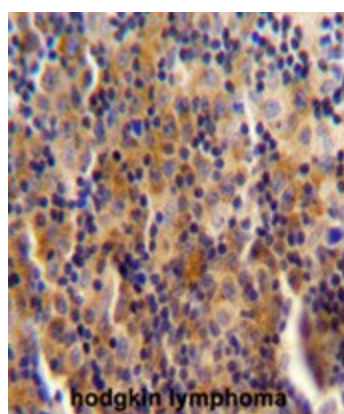
**Synonyms:** C14orf49

**Protein Families:** Transmembrane

**Product images:**



SYNE3 Antibody (C-term) western blot analysis in mouse spleen cell line lysates (35ug/lane). This demonstrates the SYNE3 antibody detected the SYNE3 protein (arrow).



SYNE3 antibody (C-term) immunohistochemistry analysis in formalin fixed and paraffin embedded human hodgkin lymphoma followed by peroxidase conjugation of the secondary antibody and DAB staining. This data demonstrates the use of SYNE3 antibody (C-term) for immunohistochemistry. Clinical relevance has not been evaluated.