

Product datasheet for **AP54123PU-N**

SYNC (N-term) Rabbit Polyclonal Antibody

Product data:

Product Type:	Primary Antibodies
Applications:	FC, IHC, WB
Recommended Dilution:	ELISA: 1/1000. Western Blot: 1/100 - 1/500. Immunohistochemistry on paraffin sections: 1/50 - 1/100. Flow Cytometry: 1/10 - 1/50.
Reactivity:	Human
Host:	Rabbit
Isotype:	Ig
Clonality:	Polyclonal
Immunogen:	KLH conjugated synthetic peptide between 133-163 amino acids from the N-terminal region of human SYNC1
Specificity:	This antibody reacts to SYNC1
Formulation:	PBS State: Aff - Purified State: Liquid purified Ig fraction Preservative: 0.09% (W/V) sodium azide
Concentration:	lot specific
Purification:	Affinity chromatography on Protein A
Conjugation:	Unconjugated
Storage:	Store the antibody undiluted at 2-8°C for one month or (in aliquots) at -20°C for longer. Avoid repeated freezing and thawing.
Stability:	Shelf life: one year from despatch.
Predicted Protein Size:	55299 Da
Gene Name:	syncoilin, intermediate filament protein
Database Link:	Entrez Gene 81493 Human Q9H7C4



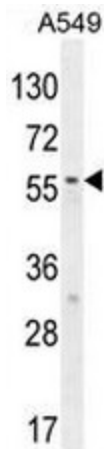
[View online »](#)

Background:

This gene encodes a member of the intermediate filament family which contains an N-terminal head domain, followed by a central coiled-coil region and a short C-terminal tail. The protein is highly expressed in skeletal and cardiac muscle. The protein links the dystrophin associated protein complex (DAPC) to desmin filaments in muscle and may have a structural role in striated muscle. Multiple transcript variants encoding different isoforms have been found for this gene.

Synonyms:

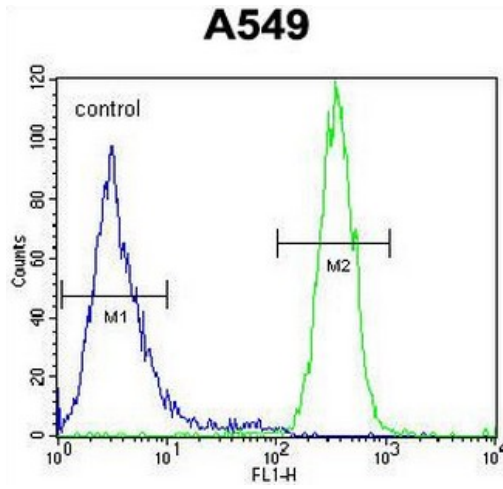
SYNC, SYNC1, Syncoilin intermediate filament 1, Syncoilin-1

Product images:

SYNC1 Antibody (N-term) western blot analysis in A549 cell line lysates (35ug/lane). This demonstrates the SYNC1 antibody detected the SYNC1 protein (arrow).



SYNC1 Antibody (N-term) immunohistochemistry analysis in formalin fixed and paraffin embedded human skeletal muscle followed by peroxidase conjugation of the secondary antibody and DAB staining. This data demonstrates the use of the SYNC1 Antibody (N-term) for immunohistochemistry. Clinical relevance has not been evaluated.



SYNCI Antibody (N-term) flow cytometric analysis of A549 cells (right histogram) compared to a negative control cell (left histogram). FITC-conjugated goat-anti-rabbit secondary antibodies were used for the analysis.