

## Product datasheet for **AP54120PU-N**

### **SYK (N-term) Rabbit Polyclonal Antibody**

#### **Product data:**

Product Type:	Primary Antibodies
Applications:	WB
Recommended Dilution:	<b>ELISA:</b> 1/1000. <b>Western blot:</b> 1/100 - 1/500.
Reactivity:	Human
Host:	Rabbit
Isotype:	Ig
Clonality:	Polyclonal
Immunogen:	KLH conjugated synthetic peptide between 31-59 amino acids from the N-terminal region of human MID1IP1
Specificity:	This antibody detects SYK at N-term.
Formulation:	PBS State: Aff - Purified State: Liquid Ig fraction Preservative: 0.09% (W/V) sodium azide
Concentration:	lot specific
Purification:	Protein A column followed by peptide affinity purification
Conjugation:	Unconjugated
Storage:	Store at 2 - 8 °C for up to six months or (in aliquots) at -20 °C for longer. Avoid repeated freezing and thawing.
Stability:	Shelf life: one year from despatch.
Gene Name:	spleen tyrosine kinase
Database Link:	<a href="#">Entrez Gene 6850 Human P43405</a>



[View online »](#)

**Background:** This gene encodes a member of the family of non-receptor type Tyr protein kinases. This protein is widely expressed in hematopoietic cells and is involved in coupling activated immunoreceptors to downstream signaling events that mediate diverse cellular responses, including proliferation, differentiation, and phagocytosis. It is thought to be a modulator of epithelial cell growth and a potential tumour suppressor in human breast carcinomas. Alternatively spliced transcript variants encoding different isoforms have been found for this gene. [provided by RefSeq].

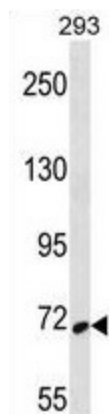
**Synonyms:** Tyrosine-protein kinase SYK, Spleen tyrosine kinase

**Note:** **Molecular Weight:** 72066 Da

**Protein Families:** Druggable Genome, Protein Kinase

**Protein Pathways:** B cell receptor signaling pathway, Fc epsilon RI signaling pathway, Fc gamma R-mediated phagocytosis, Natural killer cell mediated cytotoxicity

### Product images:



SYK Antibody western blot analysis in 293 cell line lysates (35 ug/lane). This demonstrates the SYK antibody detected the SYK protein (arrow).