

Product datasheet for **AP54119PU-N**

SYDE1 (N-term) Rabbit Polyclonal Antibody

Product data:

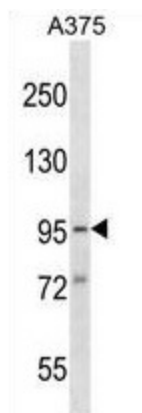
Product Type:	Primary Antibodies
Applications:	WB
Recommended Dilution:	ELISA: 1/1000. Western Blot: 1/100 - 1/500.
Reactivity:	Human
Host:	Rabbit
Isotype:	Ig
Clonality:	Polyclonal
Immunogen:	KLH conjugated synthetic peptide between 1-30 amino acids from the N-terminal region of human SYDE1
Specificity:	This antibody detects SYDE1 (N-term).
Formulation:	PBS State: Aff - Purified State: Liquid Ig fraction Preservative: 0.09% (W/V) sodium azide
Concentration:	lot specific
Purification:	Protein A column followed by peptide affinity purification
Conjugation:	Unconjugated
Storage:	Store at 2 - 8 °C for up to six months or (in aliquots) at -20 °C for longer. Avoid repeated freezing and thawing.
Stability:	Shelf life: one year from despatch.
Gene Name:	synapse defective Rho GTPase homolog 1
Database Link:	Entrez Gene 85360 Human Q6ZW31
Background:	GTPase activator for the Rho-type GTPases by converting them to an inactive GDP-bound state (By similarity).
Synonyms:	Synapse defective 1, Protein synd-1 homolog 1, FLJ13511



[View online »](#)

Note: **Molecular Weight:** 79793 Da

Product images:



SYDE1 Antibody (N-term) western blot analysis in A375 cell line lysates (35 ug/lane). This demonstrates the SYDE1 antibody detected the SYDE1 protein (arrow).