

Product datasheet for **AP54118PU-N**

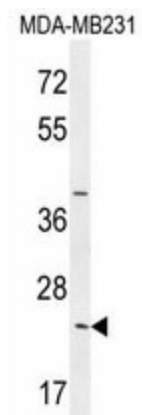
SYCE2 (N-term) Rabbit Polyclonal Antibody

Product data:

Product Type:	Primary Antibodies
Applications:	WB
Recommended Dilution:	ELISA: 1/1000. Western blot: 1/100 - 1/500.
Reactivity:	Human
Host:	Rabbit
Isotype:	Ig
Clonality:	Polyclonal
Immunogen:	KLH conjugated synthetic peptide between 7-37 amino acids from the N-terminal region of human SYCE2
Specificity:	This antibody detects SYCE2 (N-term).
Formulation:	PBS State: Aff - Purified State: Liquid Ig fraction Preservative: 0.09% (W/V) sodium azide
Concentration:	lot specific
Purification:	Protein A column followed by peptide affinity purification
Conjugation:	Unconjugated
Storage:	Store at 2 - 8 °C for up to six months or (in aliquots) at -20 °C for longer. Avoid repeated freezing and thawing.
Stability:	Shelf life: one year from despatch.
Gene Name:	synaptonemal complex central element protein 2
Database Link:	Entrez Gene 256126 Human Q6PIF2
Synonyms:	CESC1, Central element synaptonemal complex protein 1, Synaptonemal complex central element protein 2
Note:	Molecular Weight: 24690 Da



[View online »](#)

Product images:

SYCE2 Antibody (N-term) western blot analysis in MDA-MB231 cell line lysates (35 ug/lane). This demonstrates the SYCE2 antibody detected the SYCE2 protein (arrow).