

## Product datasheet for **AP54116PU-N**

### **KMT5C (N-term) Rabbit Polyclonal Antibody**

#### **Product data:**

Product Type:	Primary Antibodies
Applications:	WB
Recommended Dilution:	<b>ELISA:</b> 1/1000. <b>Western blot:</b> 1/100 - 1/500.
Reactivity:	Human, Mouse
Host:	Rabbit
Isotype:	Ig
Clonality:	Polyclonal
Immunogen:	KLH conjugated synthetic peptide between 67-98 amino acids from the N-terminal region of human SUV4-20H2
Specificity:	This antibody detects SUV420H2 / KMT5C (N-term).
Formulation:	PBS State: Purified State: Liquid Ig fraction Preservative: 0.09% (W/V) sodium azide
Concentration:	lot specific
Purification:	Saturated Ammonium Sulfate (SAS) precipitation followed by dialysis against PBS
Conjugation:	Unconjugated
Storage:	Store at 2 - 8 °C for up to six months or (in aliquots) at -20 °C for longer. Avoid repeated freezing and thawing.
Stability:	Shelf life: one year from despatch.
Gene Name:	lysine methyltransferase 5C
Database Link:	<a href="#">Entrez Gene 84787 Human Q86Y97</a>
Background:	SUV420H2 and the related enzyme SUV420H1 (MIM 610881) function as histone methyltransferases that specifically trimethylate nucleosomal histone H4 (see MIM 602822) on lysine-20 (K20) (Schotta et al., 2004 [PubMed 15145825]).
Synonyms:	Lysine N-methyltransferase 5C



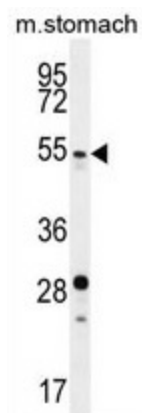
[View online »](#)

Note: **Molecular Weight:** 52113 Da

Protein Families: Druggable Genome

Protein Pathways: Lysine degradation

### Product images:



SUV4-20H2 Antibody (N-term) western blot analysis in mouse stomach tissue lysates (35 ug/lane). This demonstrates the SUV4-20H2 antibody detected the SUV4-20H2 protein (arrow).