

Product datasheet for **AP54113PU-N**

SUSD5 (C-term) Rabbit Polyclonal Antibody

Product data:

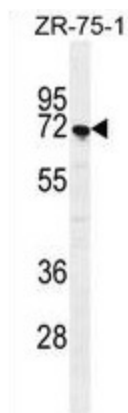
| | |
|-------------------------|--|
| Product Type: | Primary Antibodies |
| Applications: | IHC, WB |
| Recommended Dilution: | ELISA: 1/1000. Western blot: 1/100 - 1/500. Immunohistochemistry on paraffin sections: 1:10~50. |
| Reactivity: | Human |
| Host: | Rabbit |
| Isotype: | Ig |
| Clonality: | Polyclonal |
| Immunogen: | KLH conjugated synthetic peptide between 600-629 amino acids from the C-terminal region of human SUSD5 |
| Specificity: | This antibody detects SUSD5 (C-term). |
| Formulation: | PBS State: Aff - Purified State: Liquid Ig fraction Preservative: 0.09% (W/V) sodium azide |
| Concentration: | lot specific |
| Purification: | Protein A column followed by peptide affinity purification |
| Conjugation: | Unconjugated |
| Storage: | Store at 2 - 8 °C for up to six months or (in aliquots) at -20 °C for longer. Avoid repeated freezing and thawing. |
| Stability: | Shelf life: one year from despatch. |
| Predicted Protein Size: | Molecular Weight: 68021 Da |
| Gene Name: | sushi domain containing 5 |
| Database Link: | Entrez Gene 26032 Human O60279 |
| Synonyms: | KIAA0527, Sushi domain-containing protein 5 |



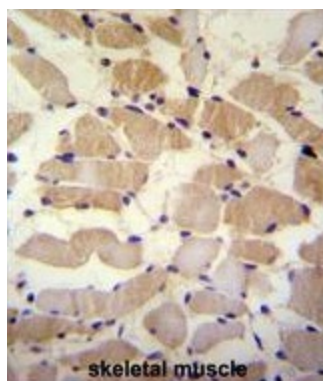
[View online »](#)

Protein Families: Transmembrane

Product images:



SUSD5 Antibody (C-term) western blot analysis in ZR-75-1 cell line lysates (35 ug/lane). This demonstrates the SUSD5 antibody detected the SUSD5 protein (arrow).



SUSD5 Antibody (C-term) immunohistochemistry analysis in formalin fixed and paraffin embedded human skeletal muscle followed by peroxidase conjugation of the secondary antibody and DAB staining. This data demonstrates the use of SUSD5 Antibody (C-term) for immunohistochemistry. Clinical relevance has not been evaluated.