

Product datasheet for **AP54110PU-N**

Spt6 (SUPT6H) (N-term) Rabbit Polyclonal Antibody

Product data:

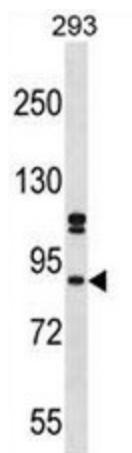
Product Type:	Primary Antibodies
Applications:	WB
Recommended Dilution:	ELISA: 1/1000. Western Blot: 1/100 - 1/500.
Reactivity:	Human
Host:	Rabbit
Isotype:	Ig
Clonality:	Polyclonal
Immunogen:	KLH conjugated synthetic peptide between 98-127 amino acids from the N-terminal region of human SUPT6H
Specificity:	This antibody reacts to SUPT6H.
Formulation:	PBS State: Aff - Purified State: Liquid purified Ig fraction Preservative: 0.09% (W/V) sodium azide
Concentration:	lot specific
Purification:	Affinity chromatography on Protein A
Conjugation:	Unconjugated
Storage:	Store the antibody undiluted at 2-8°C for one month or (in aliquots) at -20°C for longer. Avoid repeated freezing and thawing.
Stability:	Shelf life: one year from despatch.
Predicted Protein Size:	85kd Isoform 3. 199073 Da
Gene Name:	SPT6 homolog, histone chaperone
Database Link:	Entrez Gene 6830 Human Q7KZ85
Background:	SUPT6H acts to stimulate transcriptional elongation by RNA polymerase II.
Synonyms:	SPT6, KIAA0162, SPT6H, Tat-CT2 protein



[View online »](#)

Protein Families: Transcription Factors

Product images:



SUPT6H Antibody (N-term) western blot analysis in 293 cell line lysates (35ug/lane). This demonstrates the SUPT6H antibody detected the SUPT6H protein (arrow).