

Product datasheet for **AP54105PU-N**

SULT2A1 (N-term) Rabbit Polyclonal Antibody

Product data:

Product Type:	Primary Antibodies
Applications:	WB
Recommended Dilution:	ELISA: 1/1000. Western Blot: 1/100 - 1/500.
Reactivity:	Human
Host:	Rabbit
Isotype:	Ig
Clonality:	Polyclonal
Immunogen:	KLH conjugated synthetic peptide between 1-30 amino acids from the N-terminal region of human SULT2A1
Specificity:	This antibody reacts to SULT2A1.
Formulation:	PBS State: Aff - Purified State: Liquid purified Ig fraction Preservative: 0.09% (W/V) sodium azide
Concentration:	lot specific
Purification:	Affinity chromatography on Protein A
Conjugation:	Unconjugated
Storage:	Store the antibody undiluted at 2-8°C for one month or (in aliquots) at -20°C for longer. Avoid repeated freezing and thawing.
Stability:	Shelf life: one year from despatch.
Predicted Protein Size:	33780 Da
Gene Name:	sulfotransferase family 2A member 1
Database Link:	Entrez Gene 6822 Human Q06520



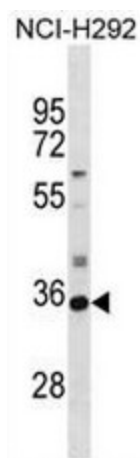
[View online »](#)

Background:

This gene encodes a member of the sulfotransferase family. Sulfotransferases aid in the metabolism of drugs and endogenous compounds by converting these substances into more hydrophilic water-soluble sulfate conjugates that can be easily excreted. This protein catalyzes the sulfation of steroids and bile acids in the liver and adrenal glands, and may have a role in the inherited adrenal androgen excess in women with polycystic ovary syndrome.

Synonyms:

Sulfotransferase 2A1, ST2A1, Bile salt sulfotransferase, Dehydroepiandrosterone sulfotransferase, DHEA-ST, Hydroxysteroid Sulfotransferase

Product images:

SULT2A1 Antibody (N-term) western blot analysis in NCI-H292 cell line lysates (35ug/lane). This demonstrates the SULT2A1 antibody detected the SULT2A1 protein (arrow).