

Product datasheet for **AP54103PU-N**

SULT1B1 (C-term) Rabbit Polyclonal Antibody

Product data:

Product Type:	Primary Antibodies
Applications:	WB
Recommended Dilution:	ELISA: 1/1000. Western Blot: 1/100 - 1/500.
Reactivity:	Human
Host:	Rabbit
Isotype:	Ig
Clonality:	Polyclonal
Immunogen:	KLH conjugated synthetic peptide between 190-219 amino acids from the C-terminal region of human SULT1B1
Specificity:	This antibody reacts to SULT1B1.
Formulation:	PBS State: Aff - Purified State: Liquid purified Ig fraction Preservative: 0.09% (W/V) sodium azide
Concentration:	lot specific
Purification:	Affinity chromatography on Protein A
Conjugation:	Unconjugated
Storage:	Store the antibody undiluted at 2-8°C for one month or (in aliquots) at -20°C for longer. Avoid repeated freezing and thawing.
Stability:	Shelf life: one year from despatch.
Predicted Protein Size:	34899 Da
Gene Name:	sulfotransferase family 1B member 1
Database Link:	Entrez Gene 27284 Human O43704



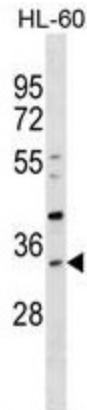
[View online »](#)

Background:

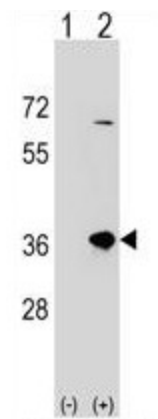
Sulfotransferase enzymes catalyze the sulfate conjugation of many hormones, neurotransmitters, drugs, and xenobiotic compounds. These cytosolic enzymes are different in their tissue distributions and substrate specificities. The gene structure (number and length of exons) is similar among family members. However, the total genomic length of this gene is greater than that of other SULT1 genes.

Synonyms:

Sulfotransferase 1B1, ST1B1, Sulfotransferase 1B2, ST1B2, SULT1B2, Thyroid hormone sulfotransferase

Product images:


SULT1B1 Antibody (C-term) western blot analysis in HL-60 cell line lysates (35ug/lane). This demonstrates the SULT1B1 antibody detected the SULT1B1 protein (arrow).



Western blot analysis of SULT1B1 (arrow) using rabbit polyclonal SULT1B1 Antibody (C-term). 293 cell lysates (2 ug/lane) either nontransfected (Lane 1) or transiently transfected (Lane 2) with the SULT1B1 gene.