

Product datasheet for **AP54102PU-N**

LOC105369243 (N-term) Rabbit Polyclonal Antibody

Product data:

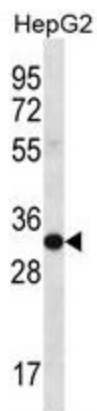
Product Type:	Primary Antibodies
Applications:	IHC, WB
Recommended Dilution:	ELISA: 1/1000. Western Blot: 1/100 - 1/500. Immunohistochemistry on paraffin sections: 1/10 - 1/50.
Reactivity:	Human
Host:	Rabbit
Isotype:	Ig
Clonality:	Polyclonal
Immunogen:	KLH conjugated synthetic peptide between 78-107 amino acids from the N-terminal region of human SULT1A3/SULT1A4
Specificity:	This antibody reacts to SULT1A3/SULT1A4.
Formulation:	PBS State: Aff - Purified State: Liquid purified Ig fraction Preservative: 0.09% (W/V) sodium azide
Concentration:	lot specific
Purification:	Affinity chromatography on Protein A
Conjugation:	Unconjugated
Storage:	Store the antibody undiluted at 2-8°C for one month or (in aliquots) at -20°C for longer. Avoid repeated freezing and thawing.
Stability:	Shelf life: one year from despatch.
Predicted Protein Size:	34196 Da
Gene Name:	Homo sapiens sulfotransferase family 1A member 4 (SULT1A4)
Database Link:	Entrez Gene 445329 Human Entrez Gene 105369243 Human P50224
Synonyms:	SULT1A3, SULT1A4, ST1A3/ST1A4, STM, M-PST, HAST3, TL-PST, Aryl sulfotransferase 1A3/1A4



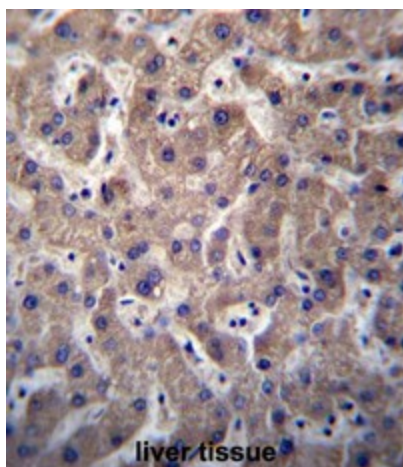
[View online »](#)

Protein Pathways: Sulfur metabolism

Product images:



SULT1A3/SULT1A4 Antibody (N-term) western blot analysis in HepG2 cell line lysates (35ug/lane). This demonstrates the SULT1A3/SULT1A4 antibody detected the SULT1A3/SULT1A4 protein (arrow).



SULT1A3/SULT1A4 Antibody (N-term) immunohistochemistry analysis in formalin fixed and paraffin embedded human liver tissue followed by peroxidase conjugation of the secondary antibody and DAB staining. This data demonstrates the use of SULT1A3/SULT1A4 Antibody (N-term) for immunohistochemistry. Clinical relevance has not been evaluated.