

Product datasheet for **AP54101PU-N**

LOC105369243 (Center) Rabbit Polyclonal Antibody

Product data:

Product Type:	Primary Antibodies
Applications:	WB
Recommended Dilution:	ELISA: 1/1000. Western Blot: 1/100 - 1/500.
Reactivity:	Human
Host:	Rabbit
Isotype:	Ig
Clonality:	Polyclonal
Immunogen:	KLH conjugated synthetic peptide between 66-95 amino acids from the Central region of human SULT1A3
Specificity:	This antibody reacts to SULT1A3.
Formulation:	PBS State: Aff - Purified State: Liquid purified Ig fraction Preservative: 0.09% (W/V) sodium azide
Concentration:	lot specific
Purification:	Affinity chromatography on Protein A
Conjugation:	Unconjugated
Storage:	Store the antibody undiluted at 2-8°C for one month or (in aliquots) at -20°C for longer. Avoid repeated freezing and thawing.
Stability:	Shelf life: one year from despatch.
Predicted Protein Size:	34196 Da
Database Link:	Entrez Gene 445329 Human Entrez Gene 105369243 Human P50224



[View online »](#)

Background:

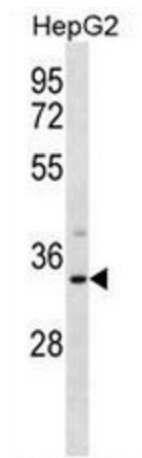
Sulfotransferase enzymes catalyze the sulfate conjugation of many hormones, neurotransmitters, drugs, and xenobiotic compounds. These cytosolic enzymes are different in their tissue distributions and substrate specificities. The gene structure (number and length of exons) is similar among family members. This gene encodes a phenol sulfotransferase with thermolabile enzyme activity. Four sulfotransferase genes are located on the p arm of chromosome 16; this gene and SULT1A4 arose from a segmental duplication. This gene is the most centromeric of the four sulfotransferase genes. Read-through transcription exists between this gene and the upstream SLX1A (SLX1 structure-specific endonuclease subunit homolog A) gene that encodes a protein containing GIY-YIG domains.

Synonyms:

SULT1A3, SULT1A4, ST1A3/ST1A4, STM, M-PST, HAST3, TL-PST, Aryl sulfotransferase 1A3/1A4

Protein Pathways:

Sulfur metabolism

Product images:

SULT1A3 Antibody (Center) western blot analysis in HepG2 cell line lysates (35ug/lane). This demonstrates the SULT1A3 antibody detected the SULT1A3 protein (arrow).