

Product datasheet for **AP54100PU-N**

SULT1A2 (C-term) Rabbit Polyclonal Antibody

Product data:

Product Type:	Primary Antibodies
Applications:	WB
Recommended Dilution:	ELISA: 1/1000. Western Blot: 1/100 - 1/500.
Reactivity:	Human
Host:	Rabbit
Isotype:	Ig
Clonality:	Polyclonal
Immunogen:	KLH conjugated synthetic peptide between 257-287 amino acids from the C-terminal region of human SULT1A2
Specificity:	This antibody reacts to SULT1A2.
Formulation:	PBS State: Aff - Purified State: Liquid purified Ig fraction Preservative: 0.09% (W/V) sodium azide
Concentration:	lot specific
Purification:	Affinity chromatography on Protein A
Conjugation:	Unconjugated
Storage:	Store the antibody undiluted at 2-8°C for one month or (in aliquots) at -20°C for longer. Avoid repeated freezing and thawing.
Stability:	Shelf life: one year from despatch.
Gene Name:	sulfotransferase family 1A member 2
Database Link:	Entrez Gene 6799 Human P50226
Background:	SULT1A2 catalyzes the sulfate conjugation of catecholamines, phenolic drugs and neurotransmitters. Is also responsible for the sulfation and activation of minoxidil. Mediates the metabolic activation of carcinogenic N-hydroxyarylamines to DNA binding products and could so participate as modulating factor of cancer risk.



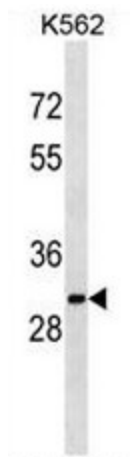
[View online »](#)

Synonyms: Sulfotransferase 1A2, ST1A2, STP2, Aryl sulfotransferase 2, Phenol sulfotransferase 2, P-PST 2

Note: **Molecular Weight:** 34310 Da

Protein Pathways: Sulfur metabolism

Product images:



SULT1A2 Antibody (C-term) western blot analysis in K562 cell line lysates (35ug/lane). This demonstrates the SULT1A2 antibody detected the SULT1A2 protein (arrow).