

Product datasheet for **AP54099PU-N**

Sulfatase 2 (SULF2) (C-term) Rabbit Polyclonal Antibody

Product data:

Product Type:	Primary Antibodies
Applications:	WB
Recommended Dilution:	ELISA: 1/1000. Western Blot: 1/100 - 1/500.
Reactivity:	Human, Mouse
Host:	Rabbit
Isotype:	Ig
Clonality:	Polyclonal
Immunogen:	KLH conjugated synthetic peptide between 831-860 amino acids from the C-terminal region of human SULF2
Specificity:	This antibody reacts to SULF2.
Formulation:	PBS State: Aff - Purified State: Liquid purified Ig fraction Preservative: 0.09% (W/V) sodium azide
Concentration:	lot specific
Purification:	Affinity chromatography on Protein A
Conjugation:	Unconjugated
Storage:	Store the antibody undiluted at 2-8°C for one month or (in aliquots) at -20°C for longer. Avoid repeated freezing and thawing.
Stability:	Shelf life: one year from despatch.
Predicted Protein Size:	100455 Da
Gene Name:	sulfatase 2
Database Link:	Entrez Gene 72043 Mouse Entrez Gene 55959 Human Q8IWU5



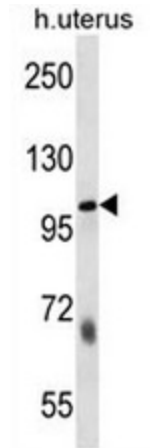
[View online »](#)

Background: Heparan sulfate proteoglycans (HSPGs) act as coreceptors for numerous heparin-binding growth factors and cytokines and are involved in cell signaling. Heparan sulfate 6-O-endosulfatases, such as SULF2, selectively remove 6-O-sulfate groups from heparan sulfate. This activity modulates the effects of heparan sulfate by altering binding sites for signaling molecules (Dai et al., 2005 [PubMed 16192265]).

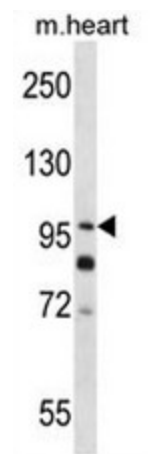
Synonyms: KIAA1247

Protein Families: Druggable Genome, Transmembrane

Product images:



SULF2 Antibody (C-term) western blot analysis in human normal Uterus cell line lysates (35ug/lane). This demonstrates the SULF2 antibody detected the SULF2 protein (arrow).



SULF2 Antibody (C-term) western blot analysis in mouse heart tissue lysates (35ug/lane). This demonstrates the SULF2 antibody detected the SULF2 protein (arrow).