

Product datasheet for **AP54094PU-N**

Syntaxin 8 (STX8) (N-term) Rabbit Polyclonal Antibody

Product data:

Product Type:	Primary Antibodies
Applications:	WB
Recommended Dilution:	ELISA: 1/1000. Western Blot: 1/100 - 1/500.
Reactivity:	Human, Mouse
Host:	Rabbit
Isotype:	Ig
Clonality:	Polyclonal
Immunogen:	KLH conjugated synthetic peptide between 15-44 amino acids from the N-terminal region of human STX8
Specificity:	This antibody reacts to STX8.
Formulation:	PBS State: Aff - Purified State: Liquid purified Ig fraction Preservative: 0.09% (W/V) sodium azide
Concentration:	lot specific
Purification:	Affinity chromatography on Protein A
Conjugation:	Unconjugated
Storage:	Store the antibody undiluted at 2-8°C for one month or (in aliquots) at -20°C for longer. Avoid repeated freezing and thawing.
Stability:	Shelf life: one year from despatch.
Predicted Protein Size:	26907 Da
Gene Name:	syntaxin 8
Database Link:	Entrez Gene 55943 Mouse Entrez Gene 9482 Human Q9UNK0



[View online »](#)

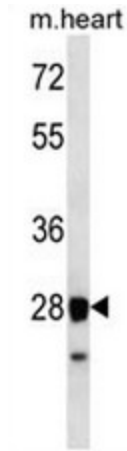
Background: The gene is a member of the syntaxin family. The encoded protein is involved in protein trafficking from early to late endosomes via vesicle fusion and exocytosis. A related pseudogene has been identified on chromosome 12. Alternative splicing results in multiple transcript variants.

Synonyms: Syntaxin-8, CARB

Protein Families: Druggable Genome, Transmembrane

Protein Pathways: SNARE interactions in vesicular transport

Product images:



STX8 Antibody (N-term) western blot analysis in mouse heart tissue lysates (35ug/lane). This demonstrates the STX8 antibody detected the STX8 protein (arrow).