

Product datasheet for **AP54093PU-N**

Syntaxin 6 (STX6) (Center) Rabbit Polyclonal Antibody

Product data:

Product Type:	Primary Antibodies
Applications:	WB
Recommended Dilution:	ELISA: 1/1000. Western Blot: 1/100 - 1/500.
Reactivity:	Human
Host:	Rabbit
Isotype:	Ig
Clonality:	Polyclonal
Immunogen:	KLH conjugated synthetic peptide between 120-149 amino acids from the Central region of human STX6
Specificity:	This antibody reacts to STX6.
Formulation:	PBS State: Aff - Purified State: Liquid purified Ig fraction Preservative: 0.09% (W/V) sodium azide
Concentration:	lot specific
Purification:	Affinity chromatography on Protein A
Conjugation:	Unconjugated
Storage:	Store the antibody undiluted at 2-8°C for one month or (in aliquots) at -20°C for longer. Avoid repeated freezing and thawing.
Stability:	Shelf life: one year from despatch.
Predicted Protein Size:	29176 Da
Gene Name:	syntaxin 6
Database Link:	Entrez Gene 10228 Human O43752
Background:	STX6 is involved in intracellular vesicle trafficking.
Synonyms:	Syntaxin-6, Golgi Marker

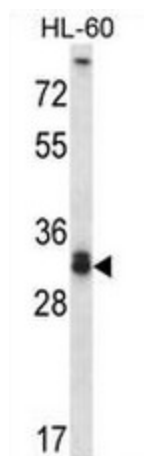


[View online »](#)

Protein Families: Druggable Genome, Transmembrane

Protein Pathways: SNARE interactions in vesicular transport

Product images:



STX6 Antibody (Center) western blot analysis in HL-60 cell line lysates (35ug/lane). This demonstrates the STX6 antibody detected the STX6 protein (arrow).