

## Product datasheet for **AP54092PU-N**

### Syntaxin 5A (STX5) (Center) Rabbit Polyclonal Antibody

#### Product data:

Product Type:	Primary Antibodies
Applications:	WB
Recommended Dilution:	<b>ELISA:</b> 1/1000. <b>Western Blot:</b> 1/100 - 1/500.
Reactivity:	Human, Mouse
Host:	Rabbit
Isotype:	Ig
Clonality:	Polyclonal
Immunogen:	KLH conjugated synthetic peptide between 179-209 amino acids from the Central region of human STX5
Specificity:	This antibody reacts to STX5.
Formulation:	PBS State: Aff - Purified State: Liquid purified Ig fraction Preservative: 0.09% (W/V) sodium azide
Concentration:	lot specific
Purification:	Affinity chromatography on Protein A
Conjugation:	Unconjugated
Storage:	Store the antibody undiluted at 2-8°C for one month or (in aliquots) at -20°C for longer. Avoid repeated freezing and thawing.
Stability:	Shelf life: one year from despatch.
Predicted Protein Size:	39673 Da
Gene Name:	syntaxin 5
Database Link:	<a href="#">Entrez Gene 6811 Human Q13190</a>
Background:	STX5 mediates endoplasmic reticulum to Golgi transport (By similarity).
Synonyms:	Syntaxin-5, STX5A

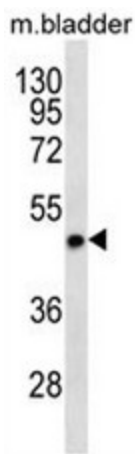


[View online »](#)

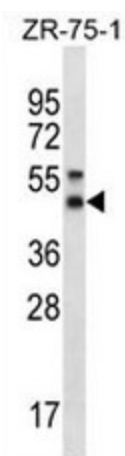
Protein Families: Druggable Genome, Transmembrane

Protein Pathways: SNARE interactions in vesicular transport

### Product images:



STX5 Antibody (Center) western blot analysis in mouse bladder tissue lysates (35ug/lane). This demonstrates the STX5 antibody detected the STX5 protein (arrow).



STX5 Antibody (Center) western blot analysis in ZR-75-1 cell line lysates (35ug/lane). This demonstrates the STX5 antibody detected the STX5 protein (arrow).