

Product datasheet for **AP54090PU-N**

Syntaxin 2 (STX2) (Center) Rabbit Polyclonal Antibody

Product data:

Product Type:	Primary Antibodies
Applications:	IHC, WB
Recommended Dilution:	ELISA: 1/1000. Western Blot: 1/100-1/500. Immunohistochemistry on Paraffin Sections: 1/10-1/50.
Reactivity:	Human, Mouse
Host:	Rabbit
Isotype:	Ig
Clonality:	Polyclonal
Immunogen:	KLH conjugated synthetic peptide between 122-152 amino acids from the Central region of Human STX2
Specificity:	This antibody recognizes Syntaxin 2 / STX2 (Center).
Formulation:	PBS State: Aff - Purified State: Liquid purified Ig fraction Preservative: 0.09% (W/V) Sodium Azide
Concentration:	lot specific
Purification:	Affinity Chromatography on Protein A
Conjugation:	Unconjugated
Storage:	Store undiluted at 2-8°C for one month or (in aliquots) at -20°C for longer. Avoid repeated freezing and thawing.
Stability:	Shelf life: one year from despatch.
Predicted Protein Size:	33341 Da
Gene Name:	syntaxin 2
Database Link:	Entrez Gene 13852 Mouse Entrez Gene 2054 Human P32856



[View online »](#)

Background:

The product of this gene belongs to the syntaxin/epimorphin family of proteins. The syntaxins are a large protein family implicated in the targeting and fusion of intracellular transport vesicles. The product of this gene regulates epithelial-mesenchymal interactions and epithelial cell morphogenesis and activation. Alternatively spliced transcript variants encoding different isoforms have been identified.

Synonyms:

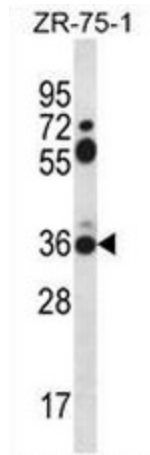
Syntaxin-2, Epimorphin, EPIM, STX2A, STX2B, STX2C

Protein Families:

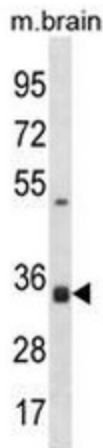
Druggable Genome, Transmembrane

Protein Pathways:

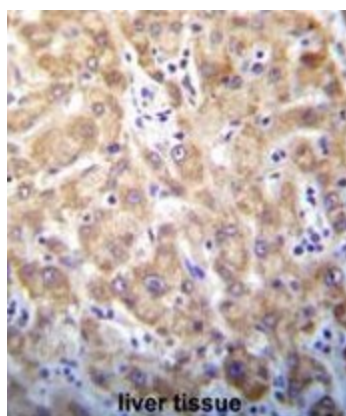
SNARE interactions in vesicular transport

Product images:


Western blot analysis in ZR-75-1 cell line lysates (35ug/lane) using Syntaxin 2 / STX2 Antibody (Center). This demonstrates the STX2 antibody detected the STX2 protein (arrow).



Western blot analysis in mouse brain tissue lysates (35ug/lane) using Syntaxin 2 / STX2 Antibody (Center). This demonstrates the STX2 antibody detected the STX2 protein (arrow).



Immunohistochemistry in Formalin-fixed, Paraffin embedded human liver tissue stained with Syntaxin 2 / STX2 Antibody (Center) followed by peroxidase conjugation of the secondary antibody and DAB staining. This data demonstrates the use of STX2 Antibody (Center) for immunohistochemistry. Clinical relevance has not been evaluated.