

Product datasheet for **AP54089PU-N**

Syntaxin 1a (STX1A) (N-term) Rabbit Polyclonal Antibody

Product data:

Product Type:	Primary Antibodies
Applications:	FC, IHC, WB
Recommended Dilution:	ELISA: 1/1000. Western Blot: 1/100-1/500. Flow Cytometry: 1/10-1/50. Immunohistochemistry on Paraffin Sections: 1/50-1/100.
Reactivity:	Human
Host:	Rabbit
Isotype:	Ig
Clonality:	Polyclonal
Immunogen:	KLH conjugated synthetic peptide between 36~65 amino acids from the N-terminal region of Human STX1A
Specificity:	This antibody recognizes Human Syntaxin 1A / STX1A (N-term).
Formulation:	PBS State: Aff - Purified State: Liquid purified Ig fraction Preservative: 0.09% Sodium Azide
Concentration:	lot specific
Purification:	Affinity Chromatography on Protein A
Conjugation:	Unconjugated
Storage:	Store undiluted at 2-8°C for one month or (in aliquots) at -20°C for longer. Avoid repeated freezing and thawing.
Stability:	Shelf life: one year from despatch.
Gene Name:	syntaxin 1A
Database Link:	Entrez Gene 6804 Human Q16623



[View online »](#)

Background:

This gene encodes a member of the syntaxin superfamily. Syntaxins are nervous system-specific proteins implicated in the docking of synaptic vesicles with the presynaptic plasma membrane. Syntaxins possess a single C-terminal transmembrane domain, a SNARE [Soluble NSF (N-ethylmaleimide-sensitive fusion protein)-Attachment protein REceptor] domain (known as H3), and an N-terminal regulatory domain (Habc). Syntaxins bind synaptotagmin in a calcium-dependent fashion and interact with voltage dependent calcium and potassium channels via the C-terminal H3 domain. This gene product is a key molecule in ion channel regulation and synaptic exocytosis.

Synonyms:

Syntaxin-1A, STX1, Neuron-specific antigen HPC-1

Note:

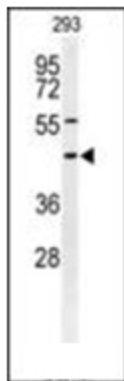
Molecular Weight: 33023 Da

Protein Families:

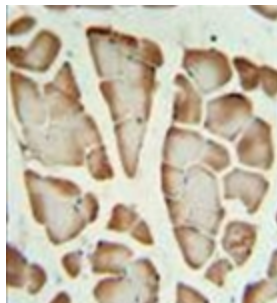
Druggable Genome, Secreted Protein, Transmembrane

Protein Pathways:

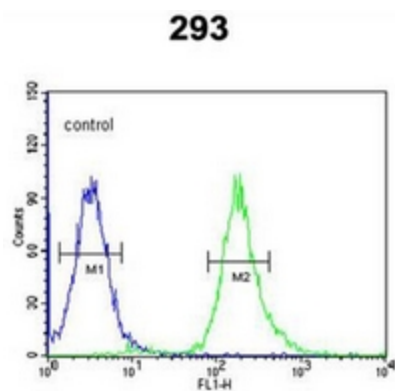
SNARE interactions in vesicular transport

Product images:

Western blot analysis of Syntaxin 1A / STX1A Antibody (N-term) in 293 cell line lysates (35ug/lane). STX1A (arrow) was detected using the purified Pab.



Formalin fixed, paraffin embedded skeletal muscle stained with Syntaxin 1A / STX1A Antibody (N-term) followed by peroxidase conjugation of the secondary antibody and DAB staining. This data demonstrates the use of the STX1A Antibody (N-term) for immunohistochemistry. Clinical relevance has not been evaluated.



Flow cytometric analysis of 293 cells using Syntaxin 1A / STX1A Antibody (N-term) (right histogram) compared to a negative control cell (left histogram). FITC-conjugated goat-anti-rabbit secondary antibodies were used for the analysis.