

## Product datasheet for **AP54087PU-N**

### Syntaxin 16 (STX16) (C-term) Rabbit Polyclonal Antibody

#### Product data:

Product Type:	Primary Antibodies
Applications:	WB
Recommended Dilution:	<b>ELISA:</b> 1/1000. <b>Western Blot:</b> 1/100-1/500.
Reactivity:	Human
Host:	Rabbit
Isotype:	Ig
Clonality:	Polyclonal
Immunogen:	KLH conjugated synthetic peptide between 254-282 amino acids from the C-terminal region of Human STX16.
Specificity:	This antibody recognizes Human Syntaxin 16 / STX16 (C-term).
Formulation:	PBS State: Aff - Purified State: Liquid purified Ig fraction Preservative: 0.09% Sodium Azide
Concentration:	lot specific
Purification:	Affinity Chromatography on Protein A
Conjugation:	Unconjugated
Storage:	Store undiluted at 2-8°C for one month or (in aliquots) at -20°C for longer. Avoid repeated freezing and thawing.
Stability:	Shelf life: one year from despatch.
Gene Name:	syntaxin 16
Database Link:	<a href="#">Entrez Gene 8675 Human</a> <a href="#">O14662</a>



[View online »](#)

**Background:** This gene encodes a protein that is a member of the syntaxin or t-SNARE (target-SNAP receptor) family. These proteins are found on cell membranes and serve as the targets for V-SNARES (vesicle-SNAP receptors) permitting specific synaptic vesicle docking and fusion. A microdeletion in the region of chromosome 20 where this gene is located has been associated with pseudohypoparathyroidism type Ib. Multiple transcript variants encoding different isoforms have been found for this gene

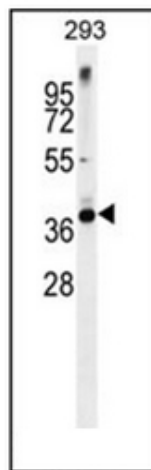
**Synonyms:** Syntaxin-16

**Note:** **Molecular Weight:** 37031 Da

**Protein Families:** Druggable Genome, Transmembrane

**Protein Pathways:** SNARE interactions in vesicular transport

**Product images:**



Western blot analysis of Syntaxin 16 / STX16 Antibody (C-term) in 293 cell line lysates (35ug/lane). This demonstrates the STX16 antibody detected the STX16 protein (arrow).