

## Product datasheet for **AP54086PU-N**

### Syntaxin 12 (STX12) (C-term) Rabbit Polyclonal Antibody

#### Product data:

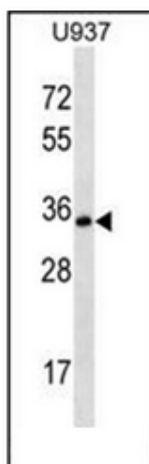
Product Type:	Primary Antibodies
Applications:	WB
Recommended Dilution:	<b>ELISA:</b> 1/1000. <b>Western Blot:</b> 1/100-1/500.
Reactivity:	Human
Host:	Rabbit
Isotype:	Ig
Clonality:	Polyclonal
Immunogen:	KLH conjugated synthetic peptide between 223-251 amino acids from the C-terminal region of Human STX12
Specificity:	This antibody recognizes Human Syntaxin 12 / STX12 (C-term).
Formulation:	PBS State: Aff - Purified State: Liquid purified Ig fraction Preservative: 0.09% Sodium Azide
Concentration:	lot specific
Purification:	Affinity Chromatography on Protein A
Conjugation:	Unconjugated
Storage:	Store undiluted at 2-8°C for one month or (in aliquots) at -20°C for longer. Avoid repeated freezing and thawing.
Stability:	Shelf life: one year from despatch.
Gene Name:	syntaxin 12
Database Link:	<a href="#">Entrez Gene 23673 Human Q86Y82</a>
Synonyms:	Syntaxin-12, STX13, STX14, MGC51957
Note:	<b>Molecular Weight:</b> 31642 Da
Protein Families:	Druggable Genome, Transmembrane



[View online »](#)

Protein Pathways: SNARE interactions in vesicular transport

### Product images:



Western blot analysis of Syntaxin 12 / STX12 Antibody (C-term) in U-937 cell line lysates (35ug/lane). This demonstrates the STX12 antibody detected the STX12 protein (arrow).