

Product datasheet for **AP54085PU-N**

STX10 (N-term) Rabbit Polyclonal Antibody

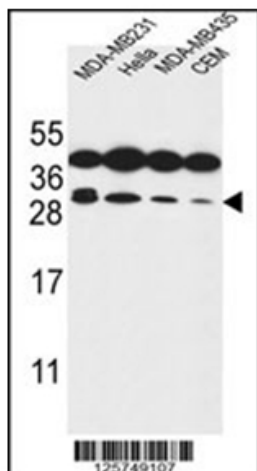
Product data:

Product Type:	Primary Antibodies
Applications:	WB
Recommended Dilution:	Western Blot: 1/1000.
Reactivity:	Human
Host:	Rabbit
Isotype:	Ig
Clonality:	Polyclonal
Immunogen:	KLH conjugated synthetic peptide between 60-89 amino acids from the N-terminal region of Human STX10
Specificity:	This antibody recognizes Human Syntaxin 10 / STX10 (N-term).
Formulation:	PBS State: Aff - Purified State: Liquid purified Ig fraction Preservative: 0.09% Sodium Azide
Concentration:	lot specific
Purification:	Affinity Chromatography on Protein A
Conjugation:	Unconjugated
Storage:	Store undiluted at 2-8°C for one month or (in aliquots) at -20°C for longer. Avoid repeated freezing and thawing.
Stability:	Shelf life: one year from despatch.
Gene Name:	syntaxin 10
Database Link:	Entrez Gene 8677 Human O60499
Synonyms:	Syntaxin-10, SYN10
Note:	Molecular Weight: 28114 Da
Protein Families:	Druggable Genome, Transmembrane
Protein Pathways:	SNARE interactions in vesicular transport



[View online »](#)

Product images:



Western blot analysis of Syntaxin 10 / STX10 Antibody (N-term) in MDA-MB231, HeLa, MDA-MB435, CEM cell line lysates (35ug/lane). This demonstrates the STX10 antibody detected the STX10 protein (arrow).