

Product datasheet for **AP54080PU-N**

STMN3 (C-term) Rabbit Polyclonal Antibody

Product data:

Product Type:	Primary Antibodies
Applications:	WB
Recommended Dilution:	ELISA: 1/1000. Western Blot: 1/100-1/500.
Reactivity:	Human
Host:	Rabbit
Isotype:	Ig
Clonality:	Polyclonal
Immunogen:	KLH conjugated synthetic peptide between 147-177 amino acids from the C-terminal region of Human STMN3
Specificity:	This antibody recognizes Human Stathmin-3 / STMN3 (C-term).
Formulation:	PBS State: Aff - Purified State: Liquid purified Ig fraction Preservative: 0.09% Sodium Azide
Concentration:	lot specific
Purification:	Affinity Chromatography on Protein A
Conjugation:	Unconjugated
Storage:	Store undiluted at 2-8°C for one month or (in aliquots) at -20°C for longer. Avoid repeated freezing and thawing.
Stability:	Shelf life: one year from despatch.
Gene Name:	stathmin 3
Database Link:	Entrez Gene 50861 Human Q9NZ72



[View online »](#)

Background:

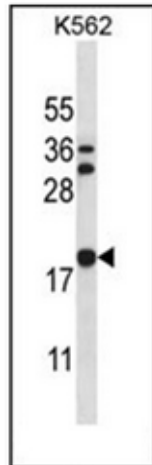
The protein encoded by this gene belongs to the stathmin/oncoprotein 18 family of microtubule-destabilizing phosphoproteins. It is similar to the SCG10 protein and is involved in signal transduction and regulation of microtubule dynamics.

Synonyms:

Stathmin 3, SCLIP, SCG10-like protein

Note:

Molecular Weight: 21017 Da

Product images:

Western blot analysis of Stathmin-3 / STMN3 Antibody (C-term) in K562 cell line lysates (35ug/lane). This demonstrates the STMN3 antibody detected the STMN3 protein (arrow).