

## Product datasheet for **AP54071PU-N**

### STEAP3 (C-term) Rabbit Polyclonal Antibody

#### Product data:

Product Type:	Primary Antibodies
Applications:	WB
Recommended Dilution:	<b>ELISA:</b> 1/1000. <b>Western Blot:</b> 1/100 - 1/500.
Reactivity:	Human
Host:	Rabbit
Isotype:	Ig
Clonality:	Polyclonal
Immunogen:	KLH conjugated synthetic peptide between 440-470 amino acids from the C-terminal region of human STEAP3
Specificity:	This antibody reacts to STEAP3.
Formulation:	PBS State: Aff - Purified State: Liquid purified Ig fraction Preservative: 0.09% (W/V) sodium azide
Concentration:	lot specific
Purification:	Affinity chromatography on Protein A
Conjugation:	Unconjugated
Storage:	Store the antibody undiluted at 2-8°C for one month or (in aliquots) at -20°C for longer. Avoid repeated freezing and thawing.
Stability:	Shelf life: one year from despatch.
Predicted Protein Size:	54601 Da
Gene Name:	STEAP3 metalloredutase
Database Link:	<a href="#">Entrez Gene 55240 Human Q658P3</a>



[View online »](#)

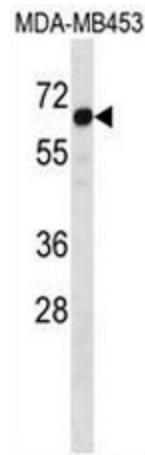
**Background:** Endosomal ferrireductase required for efficient transferrin-dependent iron uptake in erythroid cells. Participates in erythroid iron homeostasis by reducing Fe(3+) to Fe(2+). Can also reduce of Cu(2+) to Cu(1+), suggesting that it participates in copper homeostasis. Uses NAD(+) as acceptor (By similarity). May play a role downstream of p53/TP53 to interface apoptosis and cell cycle progression. Indirectly involved in exosome secretion by facilitating the secretion of proteins such as TCTP.

**Synonyms:** STEAP-3, Metalloreductase STEAP3, pHyde, Dudulin-2

**Protein Families:** Transmembrane

**Protein Pathways:** p53 signaling pathway

**Product images:**



STEAP3 Antibody (C-term) western blot analysis in MDA-MB453 cell line lysates (35ug/lane). This demonstrates the STEAP3 antibody detected the STEAP3 protein (arrow).