

Product datasheet for **AP54065PU-N**

STAR (Center) Rabbit Polyclonal Antibody

Product data:

Product Type:	Primary Antibodies
Applications:	WB
Recommended Dilution:	ELISA: 1/1000. Western Blot: 1/100-1/500.
Reactivity:	Human
Host:	Rabbit
Isotype:	Ig
Clonality:	Polyclonal
Immunogen:	KLH conjugated synthetic peptide between 87-117 amino acids from the Central region of Human STAR
Specificity:	This antibody recognizes Human STAR (Center).
Formulation:	PBS State: Aff - Purified State: Liquid purified Ig fraction Preservative: 0.09% Sodium Azide
Concentration:	lot specific
Purification:	Affinity Chromatography on Protein A
Conjugation:	Unconjugated
Storage:	Store undiluted at 2-8°C for one month or (in aliquots) at -20°C for longer. Avoid repeated freezing and thawing.
Stability:	Shelf life: one year from despatch.
Gene Name:	steroidogenic acute regulatory protein
Database Link:	Entrez Gene 6770 Human P49675



[View online »](#)

Background:

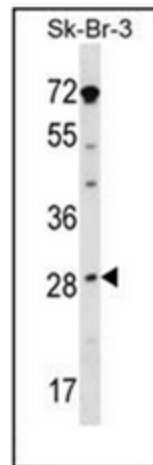
The protein encoded by this gene plays a key role in the acute regulation of steroid hormone synthesis by enhancing the conversion of cholesterol into pregnenolone. This protein permits the cleavage of cholesterol into pregnenolone by mediating the transport of cholesterol from the outer mitochondrial membrane to the inner mitochondrial membrane. Mutations in this gene are a cause of congenital lipid adrenal hyperplasia (CLAH), also called lipid CAH. A pseudogene of this gene is located on chromosome 13

Synonyms:

STARD1

Note:**Molecular Weight:** 31914 Da**Protein Families:**

Druggable Genome

Product images:

Western blot analysis in SK-BR-3 cell line lysates (35ug/lane) using STAR / STARD1 Antibody (Center). This demonstrates the STAR antibody detected the STAR protein (arrow).