

Product datasheet for **AP54064PU-N**

STAP2 (Center) Rabbit Polyclonal Antibody

Product data:

Product Type:	Primary Antibodies
Applications:	IHC, WB
Recommended Dilution:	ELISA: 1/1000. Western Blot: 1/100-1/500. Immunohistochemistry on Paraffin Sections: 1/10-1/50.
Reactivity:	Human
Host:	Rabbit
Isotype:	Ig
Clonality:	Polyclonal
Immunogen:	KLH conjugated synthetic peptide between 194-224 amino acids from the Central region of Human STAP2
Specificity:	This antibody recognizes Human STAP2 (Center).
Formulation:	PBS State: Aff - Purified State: Liquid purified Ig fraction Preservative: 0.09% Sodium Azide
Concentration:	lot specific
Conjugation:	Unconjugated
Storage:	Store undiluted at 2-8°C for one month or (in aliquots) at -20°C for longer. Avoid repeated freezing and thawing.
Stability:	Shelf life: one year from despatch.
Gene Name:	signal transducing adaptor family member 2
Database Link:	Entrez Gene 55620 Human Q9UGK3
Background:	This gene encodes the substrate of breast tumor kinase, an Src-type non-receptor tyrosine kinase. The encoded protein possesses domains and several tyrosine phosphorylation sites characteristic of adaptor proteins that mediate the interactions linking proteins involved in signal transduction pathways. Alternative splicing results in multiple transcript variants.

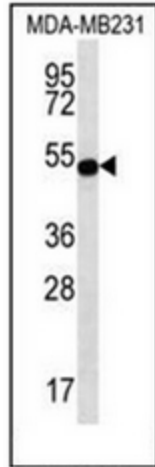


[View online »](#)

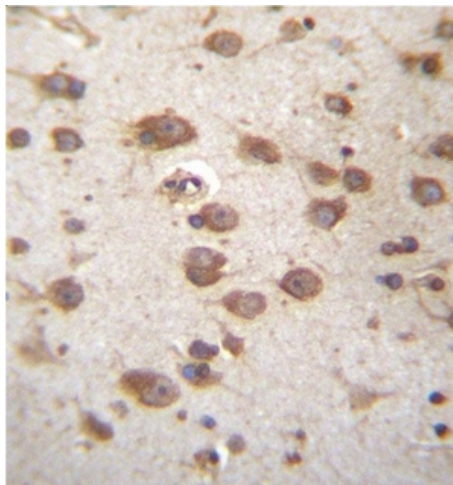
Synonyms: STAP-2, BRK substrate

Note: **Molecular Weight:** 44894 Da

Product images:



Western blot analysis in MDA-MB231 cell line lysates (35 ug/lane) using STAP2 Antibody (Center). This demonstrates the STAP2 antibody detected the STAP2 protein (arrow).



Formalin fixed and paraffin embedded human brain tissue stained with STAP2 Antibody (Center) followed by peroxidase conjugation of the secondary antibody and DAB staining. This data demonstrates the use of STAP2 Antibody (Center) for immunohistochemistry. Clinical relevance has not been evaluated.