

Product datasheet for **AP54063PU-N**

AMSH (STAMBP) (C-term) Rabbit Polyclonal Antibody

Product data:

Product Type:	Primary Antibodies
Applications:	IHC, WB
Recommended Dilution:	ELISA: 1/1000. Western Blot: 1/100-1/500. Immunohistochemistry on Paraffin Sections: 1/10-1/50.
Reactivity:	Human, Mouse
Host:	Rabbit
Isotype:	Ig
Clonality:	Polyclonal
Immunogen:	KLH conjugated synthetic peptide between 362-391 amino acids from the C-terminal region of Human STAMBP
Specificity:	This antibody recognizes Human and Mouse STAMBP (C-term).
Formulation:	PBS State: Aff - Purified State: Liquid purified Ig fraction Preservative: 0.09% Sodium Azide
Concentration:	lot specific
Purification:	Affinity Chromatography on Protein A
Conjugation:	Unconjugated
Storage:	Store undiluted at 2-8°C for one month or (in aliquots) at -20°C for longer. Avoid repeated freezing and thawing.
Stability:	Shelf life: one year from despatch.
Gene Name:	STAM binding protein
Database Link:	Entrez Gene 70527 Mouse Entrez Gene 10617 Human O95630



[View online »](#)

Background:

Cytokine-mediated signal transduction in the JAK-STAT cascade requires the involvement of adaptor molecules. One such signal-transducing adaptor molecule contains an SH3 domain that is required for induction of MYC and cell growth. The protein encoded by this gene binds to the SH3 domain of the signal-transducing adaptor molecule, and plays a critical role in cytokine-mediated signaling for MYC induction and cell cycle progression. Multiple alternatively spliced transcript variants encoding the same protein isoform have been found for this gene.

Synonyms:

STAM-binding protein, AMSH

Note:

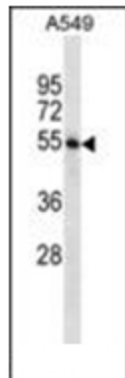
Molecular Weight: 48077 Da

Protein Families:

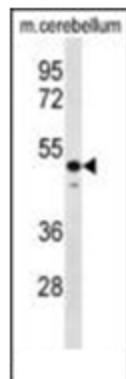
Druggable Genome

Protein Pathways:

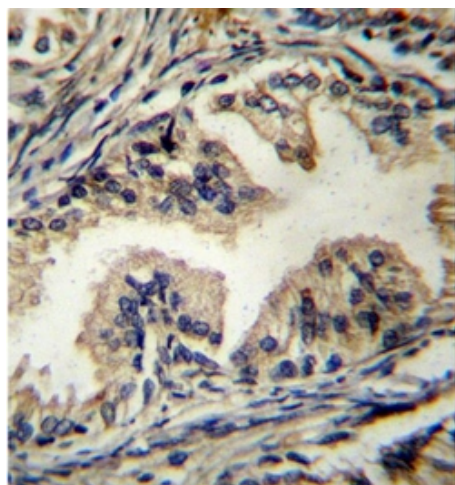
Endocytosis

Product images:

Western blot analysis in A549 cell line lysates (35 ug/lane) using STAMPB Antibody (C-term). This demonstrates the STAMPB antibody detected the STAMPB protein (arrow).



Western blot analysis in Mouse cerebellum tissue lysates (35 ug/lane using STAMPB Antibody (C-term). This demonstrates the STAMPB antibody detected the STAMPB protein (arrow).



Formalin fixed, paraffin embedded human prostate carcinoma stained with STAMPB Antibody (C-term) followed by peroxidase conjugation of the secondary antibody and DAB staining. This data demonstrates the use of STAMPB Antibody (C-term) for immunohistochemistry. Clinical relevance has not been evaluated.