

Product datasheet for **AP54062PU-N**

SA1 (STAG1) (Center) Rabbit Polyclonal Antibody

Product data:

Product Type:	Primary Antibodies
Applications:	WB
Recommended Dilution:	ELISA: 1/1000. Western Blot: 1/100 - 1/500.
Reactivity:	Human
Host:	Rabbit
Isotype:	Ig
Clonality:	Polyclonal
Immunogen:	KLH conjugated synthetic peptide between 539-568 amino acids from the Central region of human STAG1
Specificity:	This antibody reacts to STAG1.
Formulation:	PBS State: Aff - Purified State: Liquid purified Ig fraction Preservative: 0.09% (W/V) sodium azide
Concentration:	lot specific
Purification:	Affinity chromatography on Protein A
Conjugation:	Unconjugated
Storage:	Store the antibody undiluted at 2-8°C for one month or (in aliquots) at -20°C for longer. Avoid repeated freezing and thawing.
Stability:	Shelf life: one year from despatch.
Predicted Protein Size:	144427 Da
Gene Name:	stromal antigen 1
Database Link:	Entrez Gene 10274 Human Q8WVM7



[View online »](#)

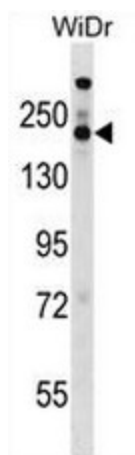
Background: This gene is a member of the SCC3 family and is expressed in the nucleus. It encodes a component of cohesin, a multisubunit protein complex that provides sister chromatid cohesion along the length of a chromosome from DNA replication through prophase and prometaphase, after which it is dissociated in preparation for segregation during anaphase.

Synonyms: SA1, SCC3 homolog 1

Protein Families: Druggable Genome

Protein Pathways: Cell cycle

Product images:



STAG1 Antibody (Center) western blot analysis in WiDr cell line lysates (35ug/lane). This demonstrates the STAG1 antibody detected the STAG1 protein (arrow).