

## Product datasheet for **AP54061PU-N**

### ST8SIA6 (Center) Rabbit Polyclonal Antibody

#### Product data:

Product Type:	Primary Antibodies
Applications:	WB
Recommended Dilution:	<b>ELISA:</b> 1/1000. <b>Western Blot:</b> 1/100-1/500.
Reactivity:	Human
Host:	Rabbit
Isotype:	Ig
Clonality:	Polyclonal
Immunogen:	KLH conjugated synthetic peptide between 137-167 amino acids from the Central region of Human ST8SIA6
Specificity:	This antibody recognizes ST8SIA6 (Center).
Formulation:	PBS State: Aff - Purified State: Liquid purified Ig fraction Preservative: 0.09% Sodium Azide
Concentration:	lot specific
Purification:	Affinity Chromatography on Protein A
Conjugation:	Unconjugated
Storage:	Store undiluted at 2-8°C for one month or (in aliquots) at -20°C for longer. Avoid repeated freezing and thawing.
Stability:	Shelf life: one year from despatch.
Gene Name:	ST8 alpha-N-acetyl-neuraminide alpha-2,8-sialyltransferase 6
Database Link:	<a href="#">Entrez Gene 338596 Human P61647</a>
Background:	Sialic acid is a key determinate of oligosaccharide structures involved in cell-cell communication, cell-substrate interaction, adhesion, and protein targeting. ST8SIA6 belongs to a family of sialyltransferases (EC 2.4.99.8) that synthesize sialylglycoconjugates (Takashima et al., 2002 [PubMed 11980897])



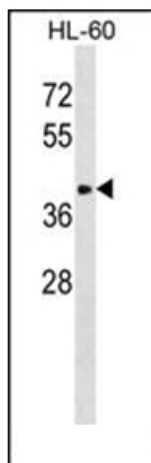
[View online »](#)

**Synonyms:** Sialyltransferase 8F, SIAT8F, SIAT8-F, St8Sia VI, ST8SiaVI

**Note:** **Molecular Weight:** 44836 Da

**Protein Families:** Transmembrane

**Product images:**



Western blot analysis in HL-60 cell line lysates (35ug/lane) using ST8SIA6 Antibody (Center). This demonstrates the ST8SIA6 antibody detected the ST8SIA6 protein (arrow).