

Product datasheet for **AP54058PU-N**

ST7 (Center) Rabbit Polyclonal Antibody

Product data:

Product Type:	Primary Antibodies
Applications:	FC, WB
Recommended Dilution:	ELISA: 1/1000. Western Blot: 1/100 - 1/500. Flow Cytometry: 1/10 - 1/50.
Reactivity:	Human
Host:	Rabbit
Isotype:	Ig
Clonality:	Polyclonal
Immunogen:	KLH conjugated synthetic peptide between 176-205 amino acids from the Central region of human ST7
Specificity:	This antibody reacts to ST7.
Formulation:	PBS State: Aff - Purified State: Liquid purified Ig fraction Preservative: 0.09% (W/V) sodium azide
Concentration:	lot specific
Purification:	Affinity chromatography on Protein A
Conjugation:	Unconjugated
Storage:	Store the antibody undiluted at 2-8°C for one month or (in aliquots) at -20°C for longer. Avoid repeated freezing and thawing.
Stability:	Shelf life: one year from despatch.
Predicted Protein Size:	67166 Da
Gene Name:	suppression of tumorigenicity 7
Database Link:	Entrez Gene 7982 Human Q9NRC1



[View online »](#)

Background:

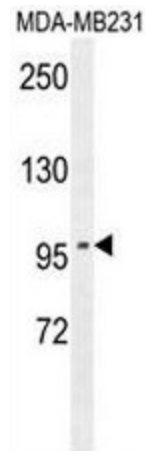
The gene for this product maps to a region on chromosome 7 identified as an autism-susceptibility locus. Mutation screening of the entire coding region in autistic individuals failed to identify phenotype-specific variants, suggesting that coding mutations for this gene are unlikely to be involved in the etiology of autism. The function of this gene product has not been determined. Transcript variants encoding different isoforms of this protein have been described.

Synonyms:

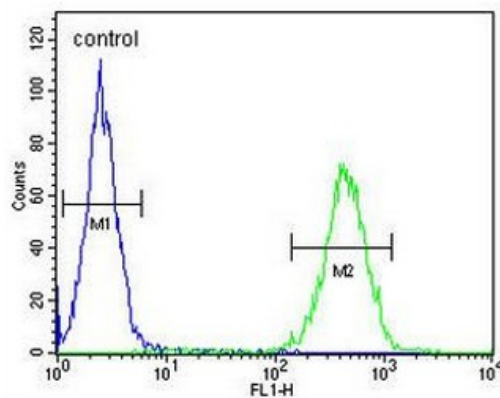
FAM4A1, HELG, RAY1, TSG7, SEN4, DKFZp762O2113

Protein Families:

Transmembrane

Product images:


ST7 Antibody (Center) western blot analysis in MDA-MB231 cell line lysates (35ug/lane). This demonstrates the ST7 antibody detected the ST7 protein (arrow).

MDA-MB231


ST7 Antibody (Center) flow cytometric analysis of MDA-MB231 cells (right histogram) compared to a negative control cell (left histogram). FITC-conjugated goat-anti-rabbit secondary antibodies were used for the analysis.