

## Product datasheet for **AP54054PU-N**

### SSRP1 (C-term) Rabbit Polyclonal Antibody

#### Product data:

Product Type:	Primary Antibodies
Applications:	WB
Recommended Dilution:	<b>ELISA:</b> 1/1000. <b>Western Blot:</b> 1/100-1/500.
Reactivity:	Human
Host:	Rabbit
Isotype:	Ig
Clonality:	Polyclonal
Immunogen:	KLH conjugated synthetic peptide between 489-518 amino acids from the C-terminal region of Human SSRP1.
Specificity:	This antibody recognizes Human SSRP1 / FACT80 (C-term).
Formulation:	PBS State: Aff - Purified State: Liquid purified Ig fraction Preservative: 0.09% Sodium Azide
Concentration:	lot specific
Purification:	Affinity Chromatography on Protein A
Conjugation:	Unconjugated
Storage:	Store undiluted at 2-8°C for one month or (in aliquots) at -20°C for longer. Avoid repeated freezing and thawing.
Stability:	Shelf life: one year from despatch.
Gene Name:	structure specific recognition protein 1
Database Link:	<a href="#">Entrez Gene 6749 Human Q08945</a>



[View online »](#)

**Background:**

The protein encoded by this gene is a subunit of a heterodimer that, along with SUPT16H, forms chromatin transcriptional elongation factor FACT. FACT interacts specifically with histones H2A/H2B to effect nucleosome disassembly and transcription elongation. FACT and cisplatin-damaged DNA may be crucial to the anticancer mechanism of cisplatin. This encoded protein contains a high mobility group box which most likely constitutes the structure recognition element for cisplatin-modified DNA. This protein also functions as a co-activator of the transcriptional activator p63. An alternatively spliced transcript variant of this gene has been described, but its full-length nature is not known.

**Synonyms:**

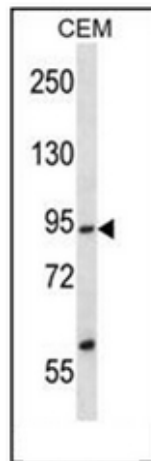
FACT complex subunit SSRP1, FACTp80, T160

**Note:**

**Molecular Weight:** 81075 Da

**Protein Families:**

Transcription Factors

**Product images:**

Western blot analysis of SSRP1 / FACT80 Antibody (C-term) in CEM cell line lysates (35ug/lane). This demonstrates the SSRP1 antibody detected the SSRP1 protein (arrow).