

Product datasheet for **AP54053PU-N**

Signal sequence receptor delta (SSR4) (Center) Rabbit Polyclonal Antibody

Product data:

| | |
|-----------------------|--|
| Product Type: | Primary Antibodies |
| Applications: | WB |
| Recommended Dilution: | ELISA: 1/1000. Western Blot: 1/100-1/500. |
| Reactivity: | Human |
| Host: | Rabbit |
| Isotype: | Ig |
| Clonality: | Polyclonal |
| Immunogen: | KLH conjugated synthetic peptide between 97-126 amino acids from the Central region of Human SSR4. |
| Specificity: | This antibody recognizes Human SSR4 / TRAPD (Center). |
| Formulation: | PBS State: Aff - Purified State: Liquid purified Ig fraction Preservative: 0.09% Sodium Azide |
| Concentration: | lot specific |
| Purification: | Affinity Chromatography on Protein A |
| Conjugation: | Unconjugated |
| Storage: | Store undiluted at 2-8°C for one month or (in aliquots) at -20°C for longer. Avoid repeated freezing and thawing. |
| Stability: | Shelf life: one year from despatch. |
| Gene Name: | signal sequence receptor subunit 4 |
| Database Link: | Entrez Gene 6748 Human P51571 |



[View online »](#)

Background:

SSR4, also called TRAPD, is assumed to be involved in protein secretion. It is located in the Xq28 region, arranged in a compact head-to-head manner with the IDH3G gene. These two genes are driven by a bidirectional promoter located between them, and encode proteins involved in unrelated biochemical pathways located in different compartments of the cell. The nontranscribed intergenic region represents only 133 bp and is embedded in a CpG island. The CpG island functions as a bidirectional promoter to initiate the transcription of both functionally unrelated genes with distinct expression patterns. SSR4 consists of six exons and is approximately 70 kb telomeric to the ALD gene. Although alternative splicing of exon 5 has not been detected in human SSR4, transcript variants missing the region homologous to human exon 5 have been detected in both *Xenopus laevis* and *Mus musculus*.

Synonyms:

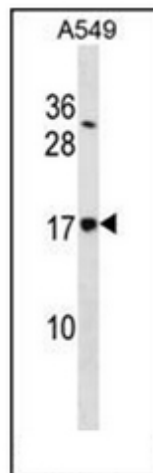
SSR-delta, TRAP-delta

Note:

Molecular Weight: 18999 Da

Protein Families:

Druggable Genome

Product images:

Western blot analysis of SSR4 / TRAPD Antibody in A549 cell line lysates (35ug/lane). This demonstrates the SSR4 antibody detected the SSR4 protein (arrow).