

Product datasheet for **AP54049PU-N**

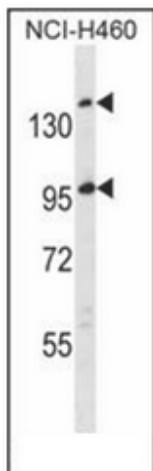
SSC5D (Center) Rabbit Polyclonal Antibody

Product data:

Product Type:	Primary Antibodies
Applications:	WB
Recommended Dilution:	ELISA: 1/1000. Western Blot: 1/100-1/500.
Reactivity:	Human
Host:	Rabbit
Isotype:	Ig
Clonality:	Polyclonal
Immunogen:	KLH conjugated synthetic peptide between 868-897 amino acids from the Central region of Human SSC5D
Specificity:	This antibody recognizes Human SSC5D (Center).
Formulation:	PBS State: Aff - Purified State: Liquid purified Ig fraction Preservative: 0.09% Sodium Azide
Concentration:	lot specific
Purification:	Affinity Chromatography on Protein A
Conjugation:	Unconjugated
Storage:	Store undiluted at 2-8°C for one month or (in aliquots) at -20°C for longer. Avoid repeated freezing and thawing.
Stability:	Shelf life: one year from despatch.
Gene Name:	scavenger receptor cysteine rich family member with 5 domains
Database Link:	Entrez Gene 284297 Human A1L4H1
Synonyms:	Scavenger receptor cysteine-rich domain-containing protein LOC284297
Note:	Molecular Weight: 165743 Da



[View online »](#)

Product images:

Western blot analysis of SSC5D Antibody in NCI-H460 cell line lysates (35ug/lane). This demonstrates the SSC5D antibody detected the SSC5D protein (arrow).